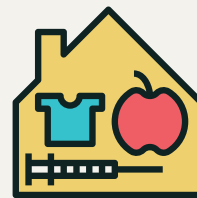


# COMMUNITY RESOURCES

## BASIC NEEDS

## CLOTHING



### **2nd Street Community Church**

504 E First St. Newberg, OR  
97132  
503-554-9383

**Hours:** Mon-Fri 9:30am-12pm

**Resources:** Clothing, Day Shelter, Breakfast, Lunch, Snacks, Person Hygiene Kits

**Eligibility:** Low-Income and Homeless

**Areas Served:** Yamhill County  
[2ndstreet.org](http://2ndstreet.org)

### **Amity Assembly of God**

118 Maddox Ave, Amity, OR  
97101  
503-585-3275

**Hours:** Thurs-Sat 8am-5pm

**Resources:** Clothing Closet, Food Pantry

**Eligibility:** Income based, limit one visit per month, proof of address is required

**Areas Served:** Yamhill County  
[ag.org](http://ag.org)

### **Community Clothing Closet**

783 SW Church St. Dallas, OR  
97338  
503-623-3778

**Hours:** Monday-Saturday  
9am-12pm

**Resources:** Clothing, Backpacks, School Supplies

**Eligibility:** Everyone welcome

**Areas Served:** Polk, Marion, and Yamhill Counties  
[dallasec.org](http://dallasec.org)

### **Community of Christ**

4570 Center St. NE Salem, OR  
97301  
503-378-0633

**Hours:** Thursday 4:30pm-6pm

**Resources:** Clothing Closet, Food Pantry

**Eligibility:** Income based, limit one visit per month

**Areas Served:** Polk, Marion, and Yamhill Counties  
[cofchrist-gpnw.org](http://cofchrist-gpnw.org)

### **First Christian Church**

1300 SE Brooks St. McMinnville, OR  
503-472-7227

**Hours:** Tues/Thurs/Sat 10am-12pm

**Resources:** Clothing Closet, Non-Perishable Foods, Personal Care Items

**Eligibility:** Call to confirm eligibility of items

**Areas Served:** Yamhill County  
[dallasfirstcc.com](http://dallasfirstcc.com)

### **Grand Ronde Clothes Closet**

Blacktail Drive, Grand Ronde, OR 97347  
559-847-7565

**Hours:** 9am to 11:30am, 12pm to 2pm

**Resources:** Clothing Closet

**Eligibility:** Residents of Polk and Yamhill County

**Areas Served:** Polk and Yamhill County

### **Hope Station Community Services, Inc.**

1337 Madison St. NE Suite 115  
Salem, OR  
503-339-7710

**Hours:** Mon-Thurs 10:30am-3pm

**Resources:** Clothing Closet, Food Pantry

**Eligibility:** \$30/Month + 2hrs/Month of volunteer time

**Areas Served:** Polk, Marion, & Yamhill Counties  
[hopestationcsi.org](http://hopestationcsi.org)

### **Love, Inc.**

200 S College St. Newberg, OR  
97132  
503-537-3999

**Hours:** By Appointment

**Resources:** Baby Clothes, Diapers, Other infant care needs

**Eligibility:** Yamhill County residents (except McMinnville), ID is required

**Areas Served:** Yamhill County  
[loveincnewberg.org](http://loveincnewberg.org)

### **Lydia's Closet**

1305 Goucher St. Amity, OR  
97101  
503-835-2551

**Hours:** Mon-Thurs 10am-1pm

**Resources:** Clothing

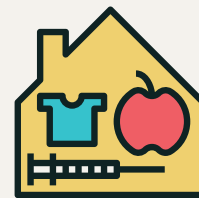
**Eligibility:** Open to the community

**Areas Served:** Yamhill County

# COMMUNITY RESOURCES

## BASIC NEEDS

## CLOTHING



### **Newberg Community Thrift Store**

414 E 3rd St. Newberg, OR  
97132  
503-538-5051

**Hours:** Thurs-Sat 11am-4pm

**Resources:** Clothing

**Eligibility:** Those experiencing homelessness can request a voucher from 2nd Street Community Church

**Areas Served:** Yamhill County  
[newbergthrift.org](http://newbergthrift.org)

### **Threads North Valley Friends**

4020 N College St. Newberg,  
OR 97312  
503-538-5340

**Hours:** Fri/Sat 11am-1pm

**Resources:** Clothing

**Eligibility:** Open to the community

**Areas Served:** Yamhill County  
[northvalleyfriends.org](http://northvalleyfriends.org)

### **Salvation Army - McMinnville**

1950 SW 2nd St. McMinnville, OR  
97128  
503-472-1009

**Hours:** Tues-Thurs 1pm-4pm

**Resources:** Clothing Closet,  
Food Pantry

**Eligibility:** Income based, SNAP,  
TANF, SSI, or LIEAP program  
eligible.

**Areas Served:** Yamhill County  
[mcminnville.salvationarmy.org](http://mcminnville.salvationarmy.org)

### **Seventh-Day Adventist Church**

530 Edgewood Dr. Newberg,  
OR 97132  
503-538-2622

**Hours:** 1st & 3rd Thursday  
10am-2pm

**Resources:** Clothing

**Eligibility:** Open to the  
community

**Areas Served:** Yamhill County  
[newbergadventist.org](http://newbergadventist.org)

### **Yamhill/Carlton High School**

503-852-7600 ext 1286  
275 N Maple St, Yamhill, OR  
97148

**Hours:** Mon-Fri 8:30am-  
3:30pm

**Resources:** Clothing Closet

**Eligibility:** All Yamhill/Carlton  
Students

**Areas Served:** Yamhill County