



# Yamhill Community Care Organization 2024 RFP Webinar



# Webinar Outline

## ➤ Part 1

Overview of Yamhill Community Care's Joint Funding 2024 RFP

- Project Requirements
- Vision and Mission
- Community Health Improvement Plan (CHIP)
- Funding Tiers
- Question and answer

## ➤ Part 2

Application Quality and Alignment

- Sustainability Plan
- Implementation and Timeline
- Outcomes
- Question and answer

# Timeline

March 15th	RFP Released
March 15th – May 3rd	Technical Assistance Available
March 26th	Technical Assistance Webinar
<b>May 3rd at 11:59pm</b>	<b>Applications Due</b>
May 6th – July 30th	Ad Hoc Committees Review Applications
July 31st	Awards Announced
August 31st	Signed Contracts returned to YCCO
September 30th	Funding Agreements Effective

## Applicants MUST be:

- 501c3 organizations,
- Tribes, or
- Public or governmental agencies
- Multiple agencies as a single applicant (one must be fiscal sponsor)

## Funding will NOT be awarded:

- To individuals in the form of scholarships
- For political purposes
- To disperse subgrants
- For any non-charitable purposes outside of the meaning of Chapter 65 of Oregon Administrative Rules (OAR) regarding 501c3 corporations
- To supplant existing funding streams for systems or programs

# Project Requirements: Align with YCCO Vision and Mission

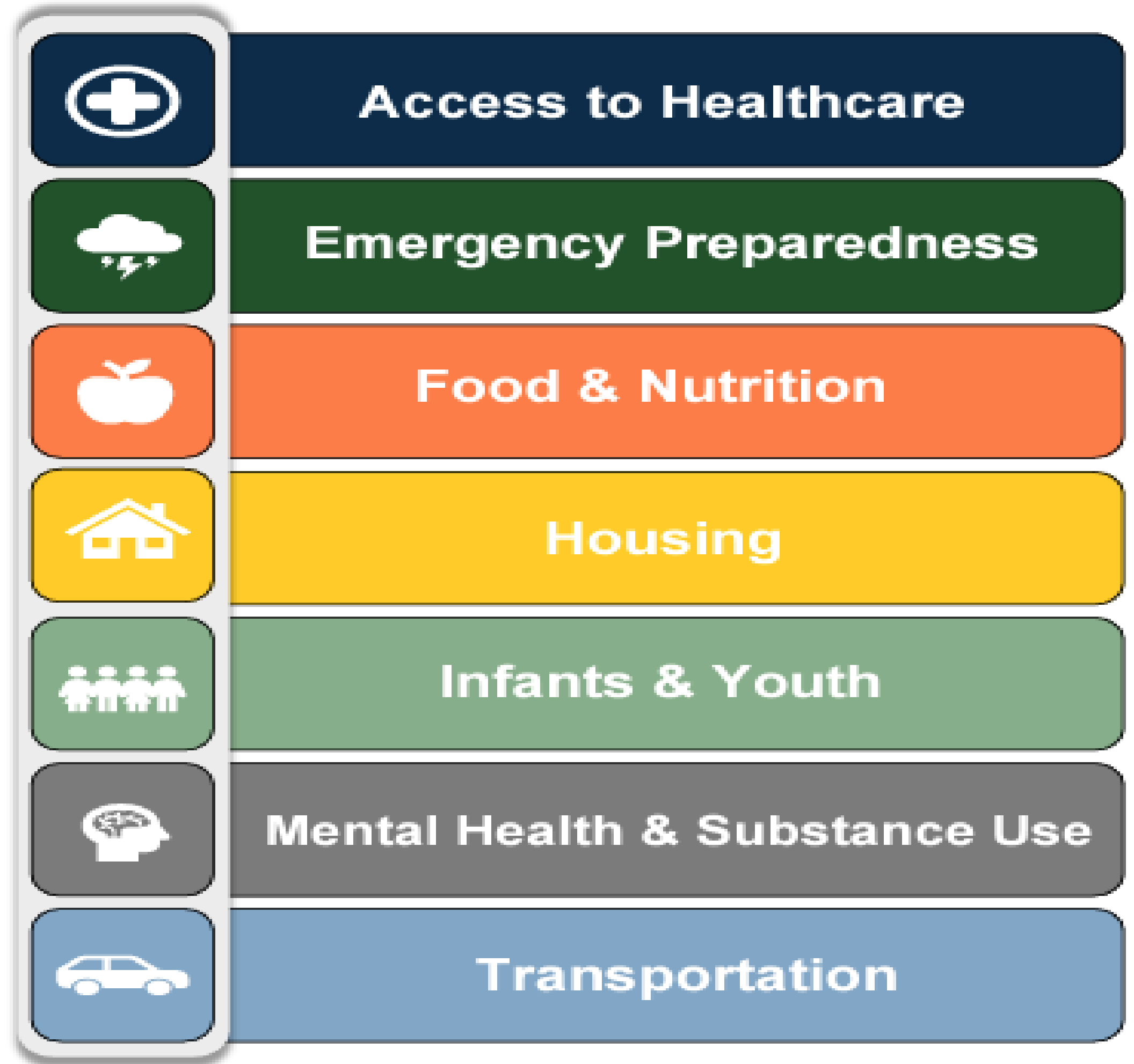
Vision: A unified healthy community that celebrates physical, mental, emotional, spiritual, and social well-being.

Mission: Working together to improve the quality of life and health of the Communities we serve by coordinating effective care.



Project Requirements:  
Align with the  
Community Health  
Improvement Plan  
(CHIP)

**Overview of Focus Areas**



## Project Requirements:

### Support a population experiencing a disparity

Preference will be given to projects that address one or more underrepresented populations, including:

- People living in geographically rural or isolated areas
  - People of color
  - Members of Oregon Tribes
  - Non-English speakers
  - Members of the LGBTQIA2S+ community
  - People experiencing homelessness
  - People with physical or cognitive disabilities
  - Others as indicated
- Proposals must demonstrate that the populations being served or impacted were included in project development.

## Project Requirements: Funding Tier Alignment

Tier 1: Under \$20,000  
Funding Priorities

THW: Traditional Health Worker

- Priorities: Training, mentorship, and support for THWs
- \$50K available





## Project Requirements: Funding Tier Alignment

Tier 1: Under \$20,000  
Funding Priorities

CHIP: Community Health Improvement Plan

- Priorities: Community improvement projects aligned with the CHIP
- \$100K available



## Project Requirements: Funding Tier Alignment

Tier 1: Under \$20,000  
Funding Priorities

### Early Learning

- Priorities: Family Support & Family Preservation Services
- Community-based services that promote safe, stable, supportive family environments (including biological, adoptive, and foster families)
- Must be focused on family, not individual member
- Must be focused on welfare of child, not education or other services
- \$67K available



# YCCO

## Early Learning

## Project Requirements: Funding Tier Alignment

### Tier 2: Under \$500K Funding Priorities

---

#### SHARE: Supporting Health for All Through Reinvestment

- Priorities: Social Determinants of Health and Equity (SDoH-E)
- Past awards \$60K to \$500K+
- Total available SHARE funds vary each year.
  - SHARE cannot support healthcare delivery or covered benefits
  - SHARE can cover capital expenses.
  - A portion of SHARE funds must go to housing initiatives.



# What Are Capital Expenditures?

Capital expenditures are funds used by a company to acquire, upgrade, and maintain physical assets such as property, plants, buildings, technology, or equipment. They are often used to undertake new projects or investments by a company. Making capital expenditures on fixed assets can include repairing a roof (if the useful life of the roof is extended), purchasing a piece of equipment, or building a new facility.



## Project Requirements: Funding Tier Alignment

Tier 3: Under \$500K  
Funding Priorities

CPW: Community Prevention and Wellness

- Priorities: evidence and research-based, primary prevention strategies
- Average award of \$105K per project in 2023



# What does 'Evidence-Based' mean?

"An evidence-based initiative is one that demonstrates a noticeable effect on improving outcomes through strong evidence from at least one high-quality study and has been reviewed by at least one reputable organization. "

- Institute of Education Sciences

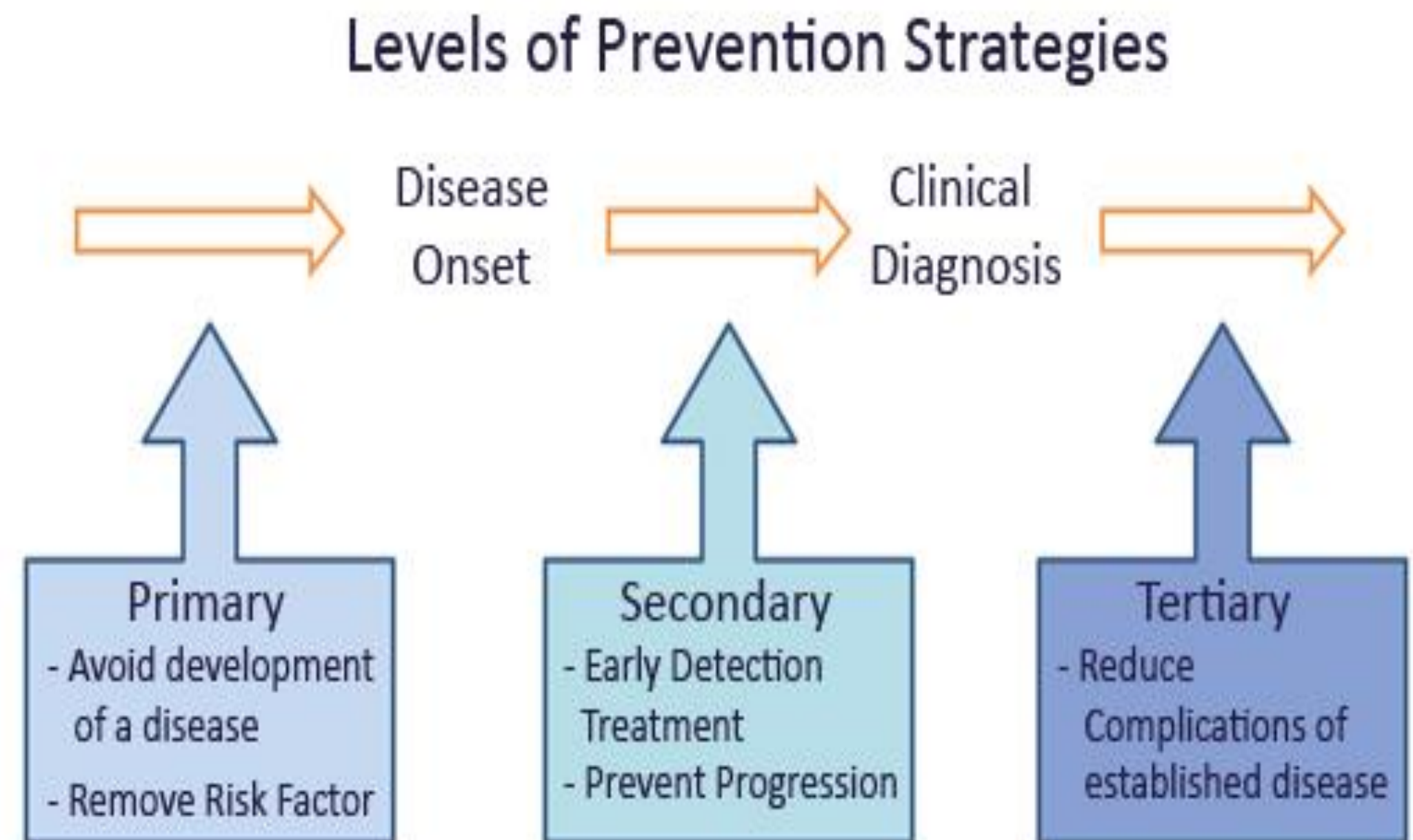
## Evidence-Based Public Health



# What is 'Primary Prevention'?

"Primary prevention refers to actions aimed at avoiding the manifestation of a disease. This may include actions to improve health through changing the impact of social and economic determinants on health; the provision of information on behavioral and medical health risks, alongside consultation and measures to decrease them."

-World Health Organization





---

Questions?



# YCCO 2024 Joint RFP: Application

Application Quality

Project Alignment



# Application Quality

- The applicant responds to all the questions in the application and answers each part of the question to the best of their ability.
- Demonstrates a well thought out project by including a sustainability plan, implementation plan, outcome measures and plan to track, and budget.
- Provides information about data collection and reporting capacity, any technical assistance needs, and includes required attachments.



Examples of sustainability efforts include, but are not limited to:

- Demonstration of a diversified funding strategy to reduce reliance on single sources.
- Identification of existing or potential collaborative partnerships with specific agencies.
- Identification of existing or potential revenue streams.
- Staff time for grant seeking, fundraising, etc.

## Application Quality: Sustainability Plan

What sustainability efforts will you use to ensure achieving your objectives, and long-term financial stability?

## Application Quality: Implementation and Timeline

The goal of this section is to provide a **CLEAR** understanding of your Project Activities

- What will you do?
- When will you start?
- When will you finish?

# Application Quality: Outcome Measures

- *What is an outcome measure?*  
An outcome measure is a specific and observable variable or set of variables that is used to assess the impact or effectiveness of an intervention, program, or activity.
- *What are outcome measures used for?*  
Outcome measures are used to evaluate whether desired goals or objectives have been achieved and provide valuable data for decision-making, performance improvement, and accountability purposes.

## Application Quality: Outcome Measures

Define clear  
and specific  
goals.

Consider  
indicators of  
success.

Select  
appropriate  
metrics.

# Application Quality: Outcome Measures

## SMART Objectives



## Application Quality: Outcome Measures - Examples

Our program will reduce homelessness in our community by 5% in 1 year.

Our program aims to reduce homelessness by 5% in the next 1 year ***by implementing targeted interventions, providing supportive services, and fostering collaboration with community partners.***



## Application Quality: Outcome Measures - Examples

50 adult patients will enroll in an eLearning online platform and will receive an accompanying booklet for lymphedema education and information.

50 adult patients ***with a new diagnosis of breast cancer will be recruited from Oregon Surgical Wellness***, enroll in an eLearning online platform, and will receive an accompanying bookly for lymphedema education and information ***by the end of the grant period.***

## Application Quality: Outcome Measures - Examples

The goal of our project is to improve literacy rates by implementing the A,B,C evidence-based literacy improvement curriculum. We will track standardized test scores, reading proficiency levels, and school attendance for 1 year.

Our project aims to improve literacy rates by implementing the A,B,C evidence-based literacy improvement curriculum. We will track standardized test scores, reading proficiency levels, and school attendance over the course of 1 year ***to assess the effectiveness of our intervention.***

*RFP: "Please list at least three outcomes you plan to track. Include goals that have a baseline (where are you starting from) and a measurable goal."*

### Narrative

'Our project aims to improve literacy rates by implementing the A,B,C evidence-based literacy improvement curriculum. We will track standardized test scores, reading proficiency levels, and school attendance over the course of 1 year **to assess the effectiveness of our intervention.**'

### Granular

This project will improve literacy rates by implementing the ABC Curriculum achieved with the following measures:

- A) Adoption of curriculum to 80% fidelity, as demonstrated by teacher surveys
- B) Increase in average standardized test scores by 3% from current baseline of 45.
- C) Increase in average standardized test scores by 10% for ELL students from current baseline of 40.
- D) Increase reading scores from baseline of 12 to 13.
- E) Decrease rate of chronic absenteeism from 19% to 15%.

# Application Alignment: Making the Connection

---

Tell us how your project aligns with YCCO's Vision, Mission, and Funding Priorities.

## The Goal

YCCO + Your Organization

Healthy Partnership that improves the Health and Well-Being in Our Community



## How to Apply

If you would like this application in your preferred language or need assistance in reading or completing this application, please contact [funding@yamhillcco.org](mailto:funding@yamhillcco.org).

Applicants are welcome to apply in their preferred language.



---

# Ad Hoc Review Committee (AHRC) Recruitment



Yamhill Community Care is recruiting members for our Ad Hoc Review Committee or AHRC. This committee consists of community members and the purpose is to bring the community perspective to our review process.

Committee members will review up to 6 applications to this year's spring RFP and will be compensated \$40 per application if they meet eligibility criteria. The committee will review applications on a rolling basis from 5/6/24 until 7/30/24.



---

Questions?

# Connect With Us

[funding@yamhillcco.org](mailto:funding@yamhillcco.org)



THANK YOU