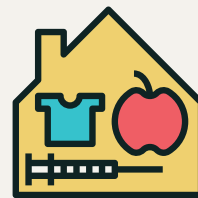


# COMMUNITY RESOURCES

## BASIC NEEDS

## BABY ITEMS



### **A Family Place Relief Nursery - McMinnville**

125 SE Cows St. McMinnville, OR  
97128  
503-472-4020

**Hours:** Thursdays 10am-12pm

**Resources:** Diapers, Baby  
Clothes

**Eligibility:** Families with Children  
ages 0-5

**Areas Served:** Yamhill County  
[familyplacerelief.org](http://familyplacerelief.org)

### **A Family Place Relief Nursery - Newberg**

600 E 6th St Newberg, OR  
97132  
503-472-4020

**Hours:** Thursdays 10am-12pm

**Resources:** Diapers, Baby  
Clothes

**Eligibility:** Families with  
Children ages 0-5

**Areas Served:** Yamhill County  
[familyplacerelief.org](http://familyplacerelief.org)

### **City Outreach Ministries**

1300 SE Brooks St. McMinnville,  
OR 97128  
503-434-4392

**Hours:** Tues/Thurs/Sat 10am-  
12pm

**Resources:** Baby Items

**Eligibility:** Open to the  
community

**Areas Served:** Yamhill County  
[givealittlefoundation.org](http://givealittlefoundation.org)

### **Clara's Closet**

1949 SW Coast Ave, Lincoln  
City, OR, 97367  
541-921-0770

**Hours:** Contact number, hours  
vary

**Resources:** Baby items

**Eligibility:** Referred by case  
worker or other professional

**Areas Served:** Polk County,  
Lincoln County, and Yamhill  
County  
[clarascloset.org](http://clarascloset.org)

### **Grand Ronde Community Clothing Closet**

Blacktail Drive, Grand Ronde,  
OR 97347  
559-847-7565

**Hours:** 9am to 11:30am, 12pm  
to 2pm

**Resources:** Clothing Closet

**Eligibility:** Residents of Polk  
and Yamhill County

**Areas Served:** Polk and Yamhill  
County

### **Love, Inc. - Newberg**

200 S College St. Newberg, OR  
97132  
503-537-3999

**Hours:** By Appointment

**Resources:** Baby Clothes,  
Diapers, Other infant care  
needs

**Eligibility:** Yamhill County  
residents (except McMinnville),  
ID is required

**Areas Served:** Yamhill County  
[loveincnewberg.org](http://loveincnewberg.org)

### **Michael the Archangel**

1725 Capital St. NE Salem, OR  
97301  
503-581-2229

**Hours:** Mon-Wed 1pm-3pm,  
Thurs 11:30am-1:30pm

**Resources:** Maternity Clothes,  
Baby Clothes, Baby Food,  
Formula, Diapers, Baby Wipes

**Eligibility:** Expectant Families  
and New Parents

**Areas Served:** Everyone  
[mtasalem.org](http://mtasalem.org)

### **Oregon Child Development Coalition**

535 G St, Independence, OR  
503-838-2745

**Hours:** Mon-Fri 7:30am-4:30pm

**Resources:** Early Childhood &  
Special Education, Vision, Hearing  
& Dental Screenings, Meals,  
Mental Health Services, Parent &  
Family Activities, Transportation

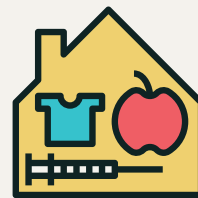
**Eligibility:** Income/Public  
Assistance based & family size.  
Children 6 weeks - 5 years of age

**Areas Served:** Polk & Yamhill  
Counties  
[ocdc.net](http://ocdc.net)

# COMMUNITY RESOURCES

## BASIC NEEDS

## CLOTHING



### **2nd Street Community Church**

504 E First St. Newberg, OR  
97132  
503-554-9383

**Hours:** Mon-Fri 9:30am-12pm

**Resources:** Clothing, Day Shelter, Breakfast, Lunch, Snacks, Person Hygiene Kits

**Eligibility:** Low-Income and Homeless

**Areas Served:** Yamhill County  
[2ndstreet.org](http://2ndstreet.org)

### **Amity Assembly of God**

118 Maddox Ave, Amity, OR  
97101  
503-585-3275

**Hours:** Thurs-Sat 8am-5pm

**Resources:** Clothing Closet, Food Pantry

**Eligibility:** Income based, limit one visit per month, proof of address is required

**Areas Served:** Yamhill County  
[ag.org](http://ag.org)

### **Community Clothing Closet**

783 SW Church St. Dallas, OR  
97338  
503-623-3778

**Hours:** Monday-Saturday  
9am-12pm

**Resources:** Clothing, Backpacks, School Supplies

**Eligibility:** Everyone welcome

**Areas Served:** Polk, Marion, and Yamhill Counties  
[dallasec.org](http://dallasec.org)

### **Community of Christ**

4570 Center St. NE Salem, OR  
97301  
503-378-0633

**Hours:** Thursday 4:30pm-6pm

**Resources:** Clothing Closet, Food Pantry

**Eligibility:** Income based, limit one visit per month

**Areas Served:** Polk, Marion, and Yamhill Counties  
[cofchrist-gpnw.org](http://cofchrist-gpnw.org)

### **First Christian Church**

1300 SE Brooks St. McMinnville, OR  
503-472-7227

**Hours:** Tues/Thurs/Sat 10am-12pm

**Resources:** Clothing Closet, Non-Perishable Foods, Personal Care Items

**Eligibility:** Call to confirm eligibility of items

**Areas Served:** Yamhill County  
[dallasfirstcc.com](http://dallasfirstcc.com)

### **Grand Ronde Clothes Closet**

Blacktail Drive, Grand Ronde, OR 97347  
559-847-7565

**Hours:** 9am to 11:30am, 12pm to 2pm

**Resources:** Clothing Closet

**Eligibility:** Residents of Polk and Yamhill County

**Areas Served:** Polk and Yamhill County

### **Hope Station Community Services, Inc.**

1337 Madison St. NE Suite 115  
Salem, OR  
503-339-7710

**Hours:** Mon-Thurs 10:30am-3pm

**Resources:** Clothing Closet, Food Pantry

**Eligibility:** \$30/Month + 2hrs/Month of volunteer time

**Areas Served:** Polk, Marion, & Yamhill Counties  
[hopestationcsi.org](http://hopestationcsi.org)

### **Love, Inc.**

200 S College St. Newberg, OR  
97132  
503-537-3999

**Hours:** By Appointment

**Resources:** Baby Clothes, Diapers, Other infant care needs

**Eligibility:** Yamhill County residents (except McMinnville), ID is required

**Areas Served:** Yamhill County  
[loveincnewberg.org](http://loveincnewberg.org)

### **Lydia's Closet**

1305 Goucher St. Amity, OR  
97101  
503-835-2551

**Hours:** Mon-Thurs 10am-1pm

**Resources:** Clothing

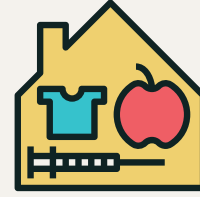
**Eligibility:** Open to the community

**Areas Served:** Yamhill County

# COMMUNITY RESOURCES

## BASIC NEEDS

## CLOTHING



### **Newberg Community Thrift Store**

414 E 3rd St. Newberg, OR 97132  
503-538-5051

**Hours:** Thurs-Sat 11am-4pm  
**Resources:** Clothing  
**Eligibility:** Those experiencing homelessness can request a voucher from 2nd Street Community Church  
**Areas Served:** Yamhill County  
[newbergthrift.org](http://newbergthrift.org)

### **Threads North Valley Friends**

4020 N College St. Newberg, OR 97312  
503-538-5340

**Hours:** Fri/Sat 11am-1pm  
**Resources:** Clothing  
**Eligibility:** Open to the community  
**Areas Served:** Yamhill County  
[northvalleyfriends.org](http://northvalleyfriends.org)

### **Salvation Army - McMinnville**

1950 SW 2nd St. McMinnville, OR 97128  
503-472-1009

**Hours:** Tues-Thurs 1pm-4pm  
**Resources:** Clothing Closet, Food Pantry  
**Eligibility:** Income based, SNAP, TANF, SSI, or LIEAP program eligible.  
**Areas Served:** Yamhill County  
[mcminnville.salvationarmy.org](http://mcminnville.salvationarmy.org)

### **Seventh-Day Adventist Church**

530 Edgewood Dr. Newberg, OR 97132  
503-538-2622

**Hours:** 1st & 3rd Thursday 10am-2pm  
**Resources:** Clothing  
**Eligibility:** Open to the community  
**Areas Served:** Yamhill County  
[newbergadventist.org](http://newbergadventist.org)

### **Yamhill/Carlton High School**

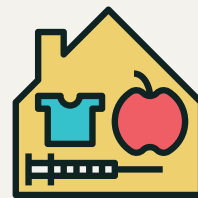
503-852-7600 ext 1286  
275 N Maple St, Yamhill, OR 97148

**Hours:** Mon-Fri 8:30am-3:30pm  
**Resources:** Clothing Closet  
**Eligibility:** All Yamhill/Carlton Students  
**Areas Served:** Yamhill County

# COMMUNITY RESOURCES

## BASIC NEEDS

## EMERGENCY RENT & UTILITIES



### **Children's Cancer Association**

1200 NW Naito Pkwy, Ste. 140  
Portland, OR  
503-244-3141  
**Hours:** Mon-Thurs 8am-5pm, Fri 8am-12pm  
**Resources:** Essential Needs, Assistance and Support  
**Eligibility:** Children with serious or life-threatening illness  
**Areas Served:** Polk, Yamhill, and Marion Counties  
[joyrx.org](http://joyrx.org)

### **Encompass Yamhill Valley**

PO Box 1634, McMinnville, OR 97128  
503-433-2411  
**Resources:** Emergency Housing  
**Eligibility:** Available to Yamhill Residents who are houseless  
**Areas Served:** Yamhill County  
[encompassyv.org](http://encompassyv.org)

### **St. Vincent De Paul - McMinnville**

435 Baker St. McMinnville, OR 97128  
503-472-6216  
**Hours:** Mon-Fri 10am-1pm  
**Resources:** Rental Assistance, Emergency Prescription Assistance  
**Eligibility:** Proof of address and ID required  
**Areas Served:** Yamhill County  
[svdpmcminnville.org](http://svdpmcminnville.org)

### **Community Services DBA Grand Shermania**

120 N Bridge St. Sheridan, OR 97378  
503-843-3133  
**Hours:** Mon 10am-2pm, Tues-Thurs 8am-4:30pm  
**Resources:** Energy Assistance and Prescription Assistance  
**Eligibility:** Available to families in Sheridan, Willamina, and Grand Ronde  
**Areas Served:** Polk and Yamhill Counties

### **PCUN**

300 Young St, Woodburn OR 97071  
503-902-0367  
**Hotline:** 1-888-274-7292  
**Hours:** Hotline Open Mon-Fri 9am-6pm  
**Resources:** Temporary Financial Assistance  
**Eligibility:** Oregon Documented or Undocumented Immigrants  
[pcun.org](http://pcun.org)

### **Yamhill Community Action Partnership**

1317 NE Dustin Ct. McMinnville, OR 97128  
503-687-1480  
**Hours:** Mon-Fri 8:30am-5pm  
**Resources:** Utilities and Rent Assistance  
**Eligibility:** Income based  
**Areas Served:** Yamhill County  
[yamhillcap.org](http://yamhillcap.org)

### **Confederated Tribes of Grand Ronde Emergency Assistance**

9615 Grand Ronde Rd. Grand Ronde, OR  
503-879-5211  
**Hours:** Mon-Fri 8am-5pm  
**Resources:** Rental and Energy Assistance  
**Eligibility:** Serve Native Americans. Some programs are income based and available in certain counties.  
**Areas Served:** Polk and Yamhill Counties

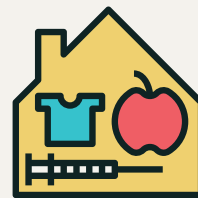
### **Salvation Army - McMinnville**

1950 SW 2nd St McMinnville, OR 97128  
503-472-1009  
**Hours:** Tues-Thurs: 1pm-4pm  
**Resources:** Utility and Prescription Assistance  
**Eligibility:** Yamhill County resident. Must call for appointment.  
[mcminnville.salvationarmy.org](http://mcminnville.salvationarmy.org)

# COMMUNITY RESOURCES

## BASIC NEEDS

## FOOD ACCESS



### **Baker Creek Community Church**

325 NW Baker Creek Rd.  
McMinnville, OR 97128  
503-434-5541

**Hours:** Wed 10am-12pm

**Resources:** Food Box and Bread Items

**Eligibility:** Limit one box per month per family

**Areas Served:** Yamhill County  
[bakercreekcommunity.org](http://bakercreekcommunity.org)

### **Community of Christ**

4570 Center St NE. Salem,  
OR 97301  
503-378-0633

**Hours:** Thurs 4:30pm-6pm

**Resources:** Emergency Food Boxes Twice a Month. Other Items Available.

**Eligibility:** Income based, proof of income is required

**Areas Served:** Polk, Marion, and Yamhill Counties

### **Cove Orchard Food Pantry**

22125 Highway 47 Yamhill, OR  
97148  
503-804-0333

**Hours:** Call for Appointment

**Resources:** Food Box

**Eligibility:** Income based

**Areas Served:** Yamhill County

### **Dayton Food Pantry**

300 Flower Lane Dayton, OR  
97114  
503-569-8788

**Hours:** 2nd and 4th Tues 4pm-6pm

**Resources:** Non-Perishables

**Eligibility:** Open to all residents of Dayton

**Areas Served:** Yamhill County

### **Department of Human Services - Yamhill**

368 NE Norton Ln. McMinnville,  
OR 97128  
503-472-0311

**Hours:** Mon-Fri 7am-5pm

**Resources:** Food Stamps (SNAP)

**Eligibility:** Income based, call for appointment

**Areas Served:** Yamhill County  
[oregon.gov/ODHS](http://oregon.gov/ODHS)

### **Good Samaritan Pantry**

4570 Center St. NE Salem, OR  
97301  
503-581-3855

**Hours:** Tuesdays, distribution begins at 2:30 pm; must be in line by 3:30 pm to receive food

**Resources:** Emergency Food Box

**Eligibility:** Income based

**Areas Served:** Polk, Marion, and Yamhill Counties

### **Grand Sherimina Food Pantry**

120 N Bridge St. Sheridan, OR  
97378  
503-843-3133

**Hours:** Tues 2pm-4pm

**Resources:** Food Box

**Eligibility:** Income based, limit one visit per month

**Areas Served:** Yamhill County  
[gsmafoodpantry.com](http://gsmafoodpantry.com)

### **Hope on the Hill**

500 NW Hill Rd. McMinnville,  
OR 97128 (lower floor of building 2)  
503-472-8476 ext. 4070

**Hours:** Tues 11am-1pm, Thurs 6pm-8pm

**Resources:** Shopping style food distribution

**Eligibility:** Income based, limit one visit per month

**Areas Served:** Yamhill County  
[hopeonthehill.org](http://hopeonthehill.org)

### **Isaiah 58 Food Bank**

118 Maddox Ave. Amity, OR  
97101  
503-835-3271

**Hours:** Thursday 12pm-3pm

**Resources:** Food Box, Bread, Produce

**Eligibility:** Income based, limit one visit per month. Proof of address is required.

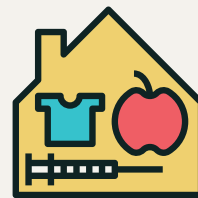
**Areas Served:** Yamhill County



# COMMUNITY RESOURCES

## BASIC NEEDS

## FOOD ACCESS



### **Iskam Mək<sup>h</sup>Mək-Haws**

9675 Grand Ronde Rd. Grand  
Ronde, OR 97347  
503-879-3663

**Hours:** Wednesdays and  
Fridays 10am-2pm

**Resources:** Food Boxes

**Eligibility:** All are welcome

**Areas Served:** Polk and Yamhill  
Counties

### **Lafayette Community Church**

365 3rd Street (99w) Lafayette,  
OR 97127  
503-864-8409

**Hours:** 2nd & 4th Tues 4pm-5pm

**Resources:** Food Box

**Eligibility:** Income Based

**Areas Served:** Yamhill County  
[lafayettecommunitychurch.org](http://lafayettecommunitychurch.org)

### **Love, Inc. - Newberg**

200 S College St, Newberg,  
OR 97132  
503-537-3999

**Hours:** Mon-Thurs 10am-1pm

**Resources:** Non-Perishables  
and Frozen Meals

**Eligibility:** Yamhill County  
residents (except McMinnville),  
ID and proof of address  
required

**Areas Served:** Yamhill County  
[loveincnewberg.org](http://loveincnewberg.org)

### **New Life Community Church**

410 14th St. SE Salem, OR  
97301  
503-399-2120

**Hours:** 4th Sat of the month  
10:30am-12:30pm

**Resources:** Emergency Food  
Box

**Eligibility:** Income based with  
limit of one visit per month

**Areas Served:** Polk, Marion,  
and Yamhill Counties

### **Newberg Northwest Christian Church**

2315 Villa Rd. Newberg, OR  
97132  
503-538-3104

**Food Pantry Hours:** Sun

11:30am to 12pm, Tue 9am to  
10am, Thu 4pm-6pm.

**Hot Meal Hours:** Thu 4:30pm-  
5:45pm

**Resources:** Hot Meals, Bread,  
and Non-perishable

**Eligibility:** Open to all in need

**Areas Served:** Yamhill County  
[newbergcc.org](http://newbergcc.org)

### **Newberg Fish Emergency Services**

125-A Elliott Rd. Newberg, OR  
97132  
503-538-4444

**Hours:** Mon/Thurs 10 am-1 pm,  
Tues 10 am-1 pm & 5 pm-7 pm

**Resources:** Food Box

**Eligibility:** Income based, limit  
one visit per month, proof of  
address required

**Areas Served:** Yamhill County  
[newbergfish.org](http://newbergfish.org)

### **Promise Pantry**

33331 Full Quartz Landing  
Dundee, OR 97115  
503-307-0730

**Hours:** Sun 1pm-3pm

**Resources:** Food Bank

**Eligibility:** Income based with  
limit of one visit per month

**Areas Served:** Yamhill County  
[promisecenter.org](http://promisecenter.org)

### **Salvation Army - McMinnville**

1950 SW 2nd St McMinnville,  
OR 97128  
503-434-7292

**Hours:** Tues-Thurs 1pm-4pm

**Resources:** Emergency Food  
Box

**Eligibility:** Income based, or be  
SNAP, TANF, or SSI eligible.  
Proof of income required.

**Areas Served:** Yamhill County  
[mcminnville.salvationarmy.org](http://mcminnville.salvationarmy.org)

### **Share and Care**

445 N Maple St Yamhill, OR  
97148  
503-662-4489

**Hours:** Hours vary. Please call  
for appointment.

**Resources:** Food Bank

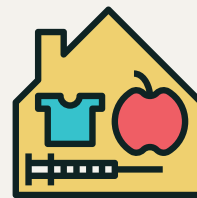
**Eligibility:** Income based

**Areas Served:** Yamhill County

# COMMUNITY RESOURCES

## BASIC NEEDS

## FOOD ACCESS



### **St. Vincent De Paul - McMinnville**

435 SE Baker St McMinnville,  
OR 97128  
503-472-2003

**Hours:** Mon-Fri 10am-1pm

**Resources:** Food Box

**Eligibility:** Intake  
appointment required.

**Areas Served:** Yamhill County

### **Yamhill Gleaners**

4155 NE Three Mile Ln  
McMinnville, OR 97128  
503-472-7171

**Hours:** Call for appointment

**Resources:** Fresh Local  
Produce

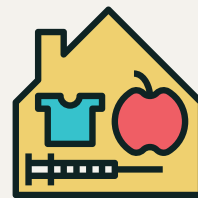
**Eligibility:** Call for membership

**Areas Served:** Polk and Yamhill  
Counties

# COMMUNITY RESOURCES

## BASIC NEEDS

## FURNITURE & HOUSEHOLD ITEMS



### **City Outreach Ministries**

1300 SE Brooks St McMinnville,  
OR 97128  
503-434-4392

**Hours:** Tues/Thurs/Sat 10am-12pm

**Resources:** Furniture and Household Items

**Eligibility:** Limit one visit per month. ID required for first visit.

**Areas Served:** Yamhill County  
[givealittlefoundation.org](http://givealittlefoundation.org)

### **Community Warehouse**

8380 SW Nyberg St Tualatin,  
OR 97062  
503-347-2147

**Hours:** Appointment based

**Resources:** Furniture, Household Items, Linens, and Bedding

**Eligibility:** Availability based on inventory, family size, and need, need a case manager

**Areas Served:** Marion and Yamhill County  
[communitywarehouse.org](http://communitywarehouse.org)

### **First Christian Church**

1300 SE Brooks St McMinnville,  
OR  
503-472-7227

**Hours:** Tues/Thurs/Sat 10am-12pm

**Resources:** Furniture, Small Appliances, Kitchen Items, Clothing, Personal Care Items, and Food Boxes

**Eligibility:** Income based, ID required

**Areas Served:** Yamhill County  
[marketplacecoalition.servingourneighbors.org](http://marketplacecoalition.servingourneighbors.org)

### **Love, Inc.**

200 S College St. Newberg,  
OR 97132  
503-537-3999

**Hours:** By Appointment

**Resources:** Furniture and Linens

**Eligibility:** Yamhill County residents (except McMinnville), ID is required

**Areas Served:** Yamhill County  
[loveincnewberg.org](http://loveincnewberg.org)

### **Oregon Child Development Coalition**

9140 SW Pioneer Ct Suite E,  
Wilsonville, OR 97070  
503-507-1100

**Hours:** Mon-Fri 9am-1pm

**Resources:** Clothing

**Eligibility:** Those experiencing homelessness can request a voucher from 2nd Street Community Church

**Areas Served:** Yamhill County  
[ocdc.net/](http://ocdc.net/)

### **Share Inc.**

**Hours:** Wed 12pm-2pm

**Resources:** Furniture Bank

**Eligibility:** Referral through an agency or organization required

**Areas Served:** Polk and Yamhill Counties  
[shareyc.org](http://shareyc.org)

### **St. Vincent De Paul - McMinnville**

435 SE Baker St McMinnville,  
OR 97128  
503-472-6216

**Hours:** Mon-Fri 10am-1pm

**Resources:** Emergency Furniture

**Eligibility:** Intake appointment required.

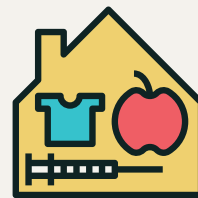
**Areas Served:** Yamhill County  
[facebook.com/svdpmac/](https://facebook.com/svdpmac/)



# COMMUNITY RESOURCES

## BASIC NEEDS

## MEAL SITES



### **2nd Street Community Church**

504 E 1st Newberg, OR 97132  
503-554-9383

**Hours:** Mon-Fri 10am-12pm

**Resources:** Breakfast, lunch, and light food to go

**Eligibility:** Welcome to all

**Areas Served:** Yamhill County  
[2ndstreet.org](http://2ndstreet.org)

### **County Gospel Rescue Mission- Yamhill**

1340 NE Logan Rd McMinnville, OR 97128  
503-472-9766

**Hours:** 24 hrs

**Resources:** Breakfast and Dinner

**Eligibility:** All are welcome

**Areas Served:** Yamhill County  
[ycgrm.org](http://ycgrm.org)

### **Dundee Community Center**

1026 Hwy 99W Dundee, OR 97115  
503-550-0862

**Hours:** Last Wednesday of the month, 5:15pm-7pm

**Resources:** Community Dinner

**Eligibility:** All are welcome

**Areas Served:** Polk, Marion, and Yamhill Counties  
[dundeecommunitycenter.com](http://dundeecommunitycenter.com)

### **First Presbyterian**

390 NE 2nd St McMinnville, OR 97128  
503-472-6256

**Hours:** Sat 5pm-6pm

**Resources:** Community Dinner

**Eligibility:** All are welcome

**Areas Served:** Marion County  
[fpc-mac.org](http://fpc-mac.org)

### **McMinnville Covenant**

2155 NW 2nd St McMinnville, OR 97128  
503-472-9021

**Hours:** Sun 4pm-6pm

**Resources:** Dinner

**Eligibility:** All are welcome

**Areas Served:** Yamhill County  
[maccov.org](http://maccov.org)

### **Newberg Christian**

2315 Villa Rd Newberg OR, 97132  
503-538-3104

**Hours:** Thurs 4:30pm(drive thru)

**Resources:** Food Box

**Eligibility:** Open to anyone needing a hot meal

**Areas Served:** Polk, Marion, and Yamhill Counties  
[newbergcc.org](http://newbergcc.org)

### **River Street Church of God**

715 River St Newberg, OR 97132  
503-538-4117

**Hours:** Wed 5:30pm

**Resources:** Community Dinner

**Eligibility:** All are welcome

**Areas Served:** Polk, Marion, and Yamhill Counties  
[rscog.com](http://rscog.com)

### **McMinnville Cooperative Ministries**

544 NE 2nd St. McMinnville, OR 97128  
503-472-5622

**Hours:** Sat 8am-10am

**Resources:** Breakfast

**Eligibility:** All are welcome

**Areas Served:** Yamhill County  
[mac-coop.org](http://mac-coop.org)

### **River Street Church of God**

715 River St Newberg, OR 97132  
503-538-4117

**Hours:** Wed 5:30pm

**Resources:** Community Dinner

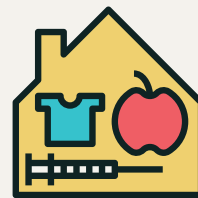
**Eligibility:** All are welcome

**Areas Served:** Polk, Marion, and Yamhill Counties  
[rscog.com](http://rscog.com)

# COMMUNITY RESOURCES

## BASIC NEEDS

## MEAL SITES



### **St. Barnabas Soup Kitchen**

822 W 2nd St McMinnville, OR  
97128  
503-472-3711

**Hours:** Mon-Fri 4pm-6pm

**Resources:** Complete meal.  
Often times produce, bread,  
and other items are available.

**Eligibility:** All are welcome

**Areas Served:** Yamhill County  
[stbmacsoupkitchen.org](http://stbmacsoupkitchen.org)

### **St. Peter Catholic Church**

2315 N Main St Newberg, OR  
97132  
503-538-4312

**Hours:** Fri 5:30pm-6pm

**Resources:** To-Go Community  
Dinner

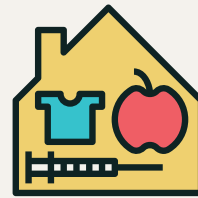
**Eligibility:** All are welcome

**Areas Served:** Yamhill County  
[stpeternewbergor.org](http://stpeternewbergor.org)

# COMMUNITY RESOURCES

## BASIC NEEDS

## TRANSPORTATION



### **Angel Flight West**

310-390-2958

**Hours:** Mon-Fri 8:30am-4:30pm

**Resources:** Free Air Travel for Medical Treatment, Organ Donations, Disaster Response, Terminally Ill

**Eligibility:** Income based, travel distance 1000 max

**Areas Served:** Polk, Marion, and Yamhill Counties  
[angelflightwest.org](http://angelflightwest.org)

### **St. Vincent De Paul - McMinnville**

435 SE Baker St. McMinnville, OR 97128  
503-472-2003

**Hours:** Mon-Fri 10am-1pm

**Resources:** Bus Passes

**Eligibility:** Must be employment, or medical related

**Areas Served:** Yamhill County  
[findhelp.org/provider/society-of-st.-vincent-de-paul---mcminnville,-oregon--mcminnville-or/](http://findhelp.org/provider/society-of-st.-vincent-de-paul---mcminnville,-oregon--mcminnville-or/)

### **Love, Inc.**

200 S College St Newberg, OR 97132  
503-537-3999

**Hours:** By Appointment

**Resources:** Bus Passes, Auto Repairs, Gas Vouchers for Medical Appointments

**Eligibility:** Call to schedule appointment

**Areas Served:** Yamhill County  
[loveincnewberg.org](http://loveincnewberg.org)

### **Roadrunner Transport**

607 Greenwood Dr. NE Keizer, OR 97303  
503-989-5151

**Hours:** Mon-Fri 7am-7pm, after hours and weekends available

**Resources:** Medical transport for those with disabilities

**Eligibility:** Private insurance, private pay, VA

**Areas Served:** Polk, Marion, and Yamhill Counties  
[roadrunnertransport.net](http://roadrunnertransport.net)

### **Veteran Transportation**

503-273-5044

**Hours:** Hours Vary

**Resources:** Provides transportation to VA Medical Centers

**Eligibility:** All veterans, priority goes to veterans in wheelchairs

**Areas Served:** Polk, Marion, and Yamhill Counties  
[tripresourcecenter.org](http://tripresourcecenter.org)

### **Well Ride**

1-844-256-5720

**Hours:** Mon-Fri 7:30am-6pm

**Resources:** Non-Emergent Medical Transport for Members of the Yamhill CCO Plan

**Eligibility:** Must be a member of the Yamhill CCO. Must call at least 48 hours in advance to schedule a ride.

**Areas Served:** Yamhill County  
[yamhillcco.org](http://yamhillcco.org)

# COMMUNITY RESOURCES

## CRISIS & LEGAL

### CRISIS LINES



#### **988 Suicide Crisis & Helpline**

988 (call or text)

**Hours:** 24 hours a day/7 days a week

**Resources:** Crisis and Referral Line

**Eligibility:** Individuals experiencing crisis

**Areas Served:** Nationwide, routed to local support

**988lifeline.org**

#### **All Options**

1-888-493-0092

**Hours:** Mon-Fri 7am-10am

**Resources:** Confidential Talk About Pregnancy, Parenting, Abortion, and Adoption

**Eligibility:** Open to everyone

**Areas Served:** Polk, Marion, and Yamhill Counties

**all-options.org**

#### **Crisis Text Line**

741741

**Hours:** 24 hours a day/7 days a week

**Resources:** Text HELLO to 741741

National Crisis Line for people who prefer texting over talking on the phone

**Eligibility:** Open to anyone

**Areas Served:** Polk, Yamhill, and Marion Counties

**crisistextline.org**

#### **David Romprey Oregon Warmline**

800-698-2392

**Hours:** Mon-Sun 9am-11pm

**Resources:** Provides Coming-Out, Relationship, Bullying, Workplace Issues, HIV/AIDS, Safe Sex Support, and Information

**Eligibility:** All LGBTQ Individuals

**Areas Served:** Polk, Marion, and Yamhill Counties

**gltbnearme.org**

#### **Marion County Mental Health**

1118 Oak St SE Salem, OR 97301  
503-585-4949

**Hours:** 24 hours a day/7 days a week

**Resources:** Provides Over the Phone Crisis Intervention Services

**Eligibility:** Open to everyone

**Areas Served:** Polk, Marion, and Yamhill Counties

**co.marion.or.us/HLT/MH/pcc**

#### **National Domestic Violence Hotline**

800-799-8255(SAFE)

**Hours:** 24 hours a day/7 days a week

**Resources:** Domestic Violence

**Eligibility:** Open to everyone

**Areas Served:** Polk, Marion, and Yamhill Counties

**ndvg.org**

#### **National Suicide Prevention Lifeline**

800-273-8255

**Hours:** 24 hours a day/7 days a week

**Resources:** Crisis Hotline

**Eligibility:** Open to everyone

**Areas Served:** Polk, Marion, and Yamhill Counties

**suicidepreventionlifeline.org**

#### **Northwest Human Services**

503-581-5535

**Hours:** 24 hours a day/7 days a week

**Resources:** Crisis Hotline, Food Boxes, and Other Resources Available

**Eligibility:** Open to Everyone

**Areas Served:** Polk, Marion, and Yamhill Counties

**northwesthumanservices.org**

#### **Oregon Military Helpline**

888-457-4838

**Hours:** 24 hours a day/7 days a week

**Resources:** Connecting Veterans in Crisis & Families with Counselors

**Eligibility:** Current service members, veterans, and their family members

**Areas Served:** Polk, Yamhill, and Marion Counties

**ormah.com**

# COMMUNITY RESOURCES

## CRISIS & LEGAL

## CRISIS LINES



### **Oregon Partnership for Life**

5100 SW Macadam Ave Ste  
400 Portland, OR  
877-968-8491

**Hours:** 24 hours a day/7 days a week

**Resources:** Confidential Crisis, Counseling & Referral Line for Youth & Families

**Eligibility:** Youth and Families

**Areas Served:** Polk, Marion, and Yamhill Counties

[linesforlife.org](http://linesforlife.org)

### **Psychiatric Crisis Center**

503-585-4949

**Hours:** 24 hours a day/7 days a week

**Resources:** Crisis Hotline

**Eligibility:** Open to everyone

**Areas Served:** Polk, Marion, and Yamhill Counties  
[co.marion.or.us/HLT/MH/pcc](http://co.marion.or.us/HLT/MH/pcc)

### **Teen 2 Teen**

877-968-8491

**Hours:** 24 hours a day/7 days a week

**Resources:** Crisis Hotline

**Eligibility:** Open to everyone ages 13-24

**Areas Served:** Polk, Marion, and Yamhill Counties  
[theyouthline.org](http://theyouthline.org)

### **Tip NW**

24/7 Crisis Line:

503.940.7997

Referrals & Info: 503-940-7997

**Hours:** 24 hours a day/7 days a week (crisis line)

**Resources:** Crisis Hotline

**Eligibility:** Open to everyone

**Areas Served:** Polk, Marion, and Yamhill Counties

[tipnw.org](http://tipnw.org)

### **The Samaritans**

503-581-5535

**Hours:** 24 hours a day/7 days a week

**Resources:** Free and Confidential Emotional and Crisis Support

**Eligibility:** Open to Everyone

**Areas Served:** Polk, Marion, and Yamhill Counties

[samaritans.org](http://samaritans.org)

### **Veterans Crisis Line**

800-273-8255

**Hours:** 24 hours a day/7 days a week

**Resources:** Crisis Hotline

**Eligibility:** Active Duty, Veterans, and Their Families

**Areas Served:** Polk, Yamhill, and Marion Counties

[defense.gov](http://defense.gov)

### **Vets4Warriors**

855-838-8255 or text 732-333-3634

**Hours:** 24 hours a day/7 days a week

**Resources:** Provides Confidential Peer Support

**Eligibility:** Veterans, Service Members,

Family Members, and Caregivers  
**Areas Served:** Polk, Marion, and Yamhill Counties

[vets4warriors.com](http://vets4warriors.com)

### **Yamhill County Behavioral Health**

627 NE Evan St. McMinnville,  
OR 97128

844-842-8200

**Hours:** 24 hours a day/7 days a week

**Resources:** Crisis and Referral Line

**Eligibility:** Individuals experiencing crisis

**Areas Served:** Yamhill County  
[co.yamhill.or.us/1088/Crisis-Services](http://co.yamhill.or.us/1088/Crisis-Services)

# COMMUNITY RESOURCES

## CRISIS & LEGAL

## DV SHELTERS & SERVICES



### **CASA of Yamhill County**

638 NE 5th St. McMinnville, OR  
97128  
503-434-6668

**Hours:** Mon-Fri 8am-5pm

**Resources:** Volunteers assigned to advocate for juvenile dependency cases as a legal party to their case.

**Eligibility:** For abused or neglected children

**Areas Served:** Yamhill County  
[yccasa.org](http://yccasa.org)

### **Child Abuse Hotline**

855-503-7233

**Hours:** 24 hours a day/7 days a week

**Resources:** Call to report concerns of child abuse or neglect

**Eligibility:** Open to anyone who would like to report concerns of child abuse or neglect

**Areas Served:** Polk, Marion, and Yamhill Counties  
[oregon.gov/odhs/report-abuse/](http://oregon.gov/odhs/report-abuse/)

### **Department of Human Services**

368 NE Norton Ln.  
McMinnville, OR 97128  
503-472-0311

**Hours:** Mon-Fri 8am-5pm

**Resources:** Child Protective Services, Family Support,

Domestic Violence Assistance

**Eligibility:** Screening Required

**Areas Served:** Yamhill County  
[oregon.gov/odhs/](http://oregon.gov/odhs/)

### **Grand Ronde Warriors of Hope Program**

503-879-1660 and/or 503-879-1487

**Hours:** Mon-Fri 8am-5pm

**Resources:** Direct Service Advocacy, Referrals, Safety Planning, Support Groups, 24 Hour Crisis Lines

**Eligibility:** Grand Ronde Tribal Members, Community, and Staff

**Areas Served:** Polk and Yamhill Counties  
[grandronde.org](http://grandronde.org)

### **Henderson House**

610 SE First St. McMinnville, OR

**Office:** 503-472-0244

**24/7 Crisis Line:** 503-472-1503

**Hours:** Mon-Fri 9am-5pm

**Resources:** Safety Planning, Protection Order Assistance, Court Accompany, Support Groups, Victim's Advocacy, Safe Shelter, Hospital & police reporting Support, resource referrals.

**Eligibility:** Walk-Ins Welcome

**Areas Served:** Yamhill County  
[hendersonhouse.org](http://hendersonhouse.org)

### **Juliette's House**

1075 SW Cedarwood Ave  
McMinnville, OR  
503-435-1550

**Hours:** Mon-Fri 8am-5pm

**Resources:** Child Abuse Exam and Screening

**Eligibility:** Polk and Yamhill Residents

**Areas Served:** Polk and Yamhill Counties  
[julietteshouse.org](http://julietteshouse.org)

### **NorthWest Senior & Disability Services**

800-846-9165

**Hours:** 24 hours a day/7 days a week

**Resources:** Hotline to Report Elderly Abuse

**Eligibility:** All domestic violence survivors

**Areas Served:** Polk, Marion, and Yamhill Counties  
[gethelp.211info.org](http://gethelp.211info.org)

### **Yamhill County Crime Victims Assistance**

535 E 5th St Rm 117 McMinnville  
503-434-7512

**Hours:** Mon-Fri 8am-5pm

**Resources:** Assistance for Victims of Crime or Stalking. Assist with Restraining Orders and Victim Compensation Programs

**Eligibility:** Available to victims of crime and/or stalking

**Areas Served:** Polk and Yamhill Counties  
[yamhillcounty.gov/454/Victim-Services](http://yamhillcounty.gov/454/Victim-Services)



# COMMUNITY RESOURCES

## CRISIS & LEGAL

## LEGAL ASSISTANCE



### **Fair Housing Council Of Oregon**

1221 SW Yamhill Street Suite 305  
Portland, OR 97205  
503-223-8197 Ext. 2  
800-424-3247 Ext. 2 HUD at  
800-877-0246

**Hours:** Mon-Fri 8:30am-5pm

**Resources:** Education & Legal Assistance for Housing Justice, Equity, and Inclusion.

**Eligibility:** Call for appointment

**Areas Served:** Oregon residents  
[fhco.org](http://fhco.org)

### **Legal Aid Services of Oregon**

280 Liberty Street SE Suite 320  
Salem, OR  
503-581-5265

**Hours:** Mon/Thurs 1pm-5pm,  
Tues/Wed 9am-5pm

**Resources:** Provides Legal Counseling and/or Representation for Low Income Families or Individuals

**Eligibility:** Income Based

**Areas Served:** Polk, Marion, and Yamhill Counties  
[lasoregon.org](http://lasoregon.org)

### **Lutheran Community Services NW**

435 NE Evans St. Suite A,  
McMinnville, OR  
503-472-4020

**Hours:** Mon-Fri 8:30am-5pm

**Resources:** Low-cost professional consultation, advice, and legal representation before USCIS. Free Citizenship classes.

**Eligibility:** Open to Yamhill County Residents

**Areas Served:** Yamhill County  
[lcsnw.org](http://lcsnw.org)

### **Oregon Law Center**

230 W Hayes St Woodburn, OR  
503-981-0336

**Hours:** Mon-Thurs, 8am-6pm, Fri 8am-5pm

**Resources:** Provides help for migrant and seasonal farmworkers with civil, employment, and work related housing issues

**Eligibility:** Agricultural Workers

**Areas Served:** Polk, Marion, and Yamhill Counties

[oregonlawcenter.org](http://oregonlawcenter.org)

### **Your Community Mediators of Yamhill County**

237 NE Ford St. Ste. 6  
McMinnville, OR  
503-435-2835

**Hours:** Mon-Fri 9am-5pm

**Resources:** Free/Low Cost Resolution Services

**Eligibility:** At least one participant must be living in Yamhill County

**Areas Served:** Yamhill County  
[ycmediation.org](http://ycmediation.org)

# COMMUNITY RESOURCES

## EDUCATION & JOB READINESS

## ADULT EDUCATION



### **Chemeketa Community College - Polk Center**

1340 SE Holman Ave. Dallas, OR 97338  
503-623-5567

**Hours:** Mon-Thurs. 8am-5pm Fri. 8am-1pm

**Resources:** GED Classes and Testing, Classes Offered in English and Spanish

**Eligibility:** Call for eligibility

**Areas Served:** Polk, Marion, and Yamhill Counties  
[chemeketa.edu](http://chemeketa.edu)

### **Chemeketa Community College - Yamhill**

288 NE Norton Ln. McMinnville, OR 97128  
503-472-9482

**Hours:** Mon-Thurs 8am-8pm, Fri 8am-1pm

**Resources:** GED Classes and Testing, Classes Offered in English and Spanish

**Eligibility:** Call for eligibility

**Areas Served:** Polk, Marion, and Yamhill Counties  
[chemeketa.edu](http://chemeketa.edu)

### **DHS Vocational Rehab**

368 Norton Ln. McMinnville, OR 97128  
503-472-2116

**Hours:** Mon-Fri 8am-5pm

**Resources:** Vocational Counseling, Guidance, Skill Evaluation, Physical Restoration, Job Development, and Job Search

**Eligibility:** Available to people with disabilities

**Areas Served:** Yamhill County

### **Mid-Valley Literacy Center**

1850 45th Ave. NE Salem, OR 97305  
503-463-1488

**Hours:** Mon-Thurs 10am-6pm

**Resources:** Language and Literacy Classes

**Eligibility:** Class fees, text and workbook expenses

**Areas Served:** Polk, Marion, and Yamhill Counties  
[midvalleyliteracycenter.org](http://midvalleyliteracycenter.org)

### **Oregon Migrant Education Program**

2611 Pringle Rd. SE Salem, OR 97302  
503-588-1657

**Hours:** Mon-Fri 8am-5pm

**Resources:** Address Unique Needs and Access Services for Migrant Families

**Eligibility:** Children of migrant families. Must have moved in the last three years.

**Areas Served:** Polk, Marion, and Yamhill Counties  
[wesd.org/omesc](http://wesd.org/omesc)

### **Portland Community College**

135 Werth Blvd. Newberg, OR 97132  
971-722-8602

**Resources:** Pre-College Classes to Prepare for College Level Courses. Career Tech Programs/Courses

**Eligibility:** Available to anyone

**Areas Served:** Marion and Yamhill Counties  
[pcc.edu](http://pcc.edu)

### **Shangri-La**

4080 Reed Road SE #150 Salem, OR 97302  
503-581-1732

**Hours:** Mon-Fri 8am-4pm

**Resources:** Training on Basic Family Management and Life Skills

**Eligibility:** Must be participating in the SNAP or TANF Program

**Areas Served:** Polk, Marion, and Yamhill Counties  
[shangri-laoregon.org](http://shangri-laoregon.org)

### **Unidos Bridging Community**

117 NE 5th St Suite D McMinnville, OR 97128  
503-447-3408

**Hours:** Mon-Fri 8am-4:40pm

**Resources:** Free Citizenship Classes to Prepare for the US Naturalization Exam

**Eligibility:** Free

**Areas Served:** Polk, Marion, and Yamhill Counties  
[unidosyamhillcounty.org](http://unidosyamhillcounty.org)

### **WorkSource Oregon - Yamhill**

370 NE Norton Ln. McMinnville, OR 97128  
503-472-5118

**Hours:** Mon-Fri 8:30am-5pm

**Resources:** GED Readiness Program

**Eligibility:** Free after registering with WSOR

**Areas Served:** Yamhill County  
[worksourceoregon.org](http://worksourceoregon.org)

# COMMUNITY RESOURCES

## EDUCATION & JOB READINESS



### **Easter Seals**

7300 SW Hunziker St, Suite 103  
Portland, OR 97223  
503-228-5108

**Hours:** Mon-Fri 8am-5pm

**Resources:** Services for Adults with Disabilities and Special Needs

**Eligibility:** Adults and children with disabilities or special needs

**Areas Served:** Polk, Marion, and Yamhill Counties  
[easterseals.com](http://easterseals.com)

### **Job Corps**

1-800-733-5627

**Resources:** Career Technical Training, Education, Counseling, and Assistance Overcoming Employment Barriers

**Eligibility:** 16-24 years old, income based, legal resident of the US

**Areas Served:** Polk, Marion, and Yamhill Counties  
[jobcorps.gov](http://jobcorps.gov)

### **McMinnville Job and Career Center**

370 NE Norton Ln. McMinnville, OR 97128  
503-472-5118

**Hours:** Mon-Fri 8am-5pm

**Resources:** Job Search, Current Job Listings, Resume Tools, Individual Job Search and Counseling

**Eligibility:** Adults seeking employment

**Areas Served:** Yamhill County  
[oregon.gov/jobs/pages/index.aspx](http://oregon.gov/jobs/pages/index.aspx)

### **UGM Employment & Career Services**

777 Commercial St. NE Salem, OR 97301  
503-362-3982

**Hours:** Mon-Fri 6am-5:30pm

**Resources:** Job Readiness Prep, Assistance with Job Search, Resume, Interviews

**Eligibility:** Must be enrolled in New Life Fellowship Program

**Areas Served:** Polk, Marion, and Yamhill Counties  
[citygatenetwork.org/assnfe/CompanyDirectory.asp?](http://citygatenetwork.org/assnfe/CompanyDirectory.asp?)

### **WorkSource Oregon - Yamhill**

370 NE Norton Ln.  
McMinnville, OR 97128  
503-472-5118

**Hours:** Mon-Fri 8:30am-5pm

**Resources:** GED Readiness Program

**Eligibility:** Available to All

**Areas Served:** Yamhill County  
[worksourceoregon.org](http://worksourceoregon.org)

### **YOOP!**

117 NE 5th St. H McMinnville, OR 97128  
503-883-9768

**Hours:** Mon-Fri 8am-5pm

**Resources:** Academic and Job Readiness Support

**Eligibility:** Ages 16-24

**Areas Served:** Yamhill County  
[myyoop.org](http://myyoop.org)

# COMMUNITY RESOURCES

## EDUCATION & JOB READINESS



### **Amity School District**

807 Trade St. Amity, OR 97101  
503-835-2171

**Hours:** Mon-Fri 8am-5pm

**Areas Served:** Polk and Yamhill  
Counties

[amity.k12.or.us](http://amity.k12.or.us)

### **Dayton School District**

780 Ferry St. Dayton, OR 97114  
503-864-2215

**Hours:** Mon-Fri 7:30am-4pm

**Areas Served:** Yamhill County

[dayton.k12.or.us](http://dayton.k12.or.us)

### **McMinnville School District**

800 NE Lafayette Ave.  
McMinnville, OR  
503-565-4000

**Hours:** Mon-Fri 7:30am-  
4:30pm

**Areas Served:** Yamhill County

[msd.k12.or.us](http://msd.k12.or.us)

### **Newberg School District**

714 6th St. Newberg, OR 97132  
503-554-5000

**Hours:** Mon-Fri 8am-5pm

**Areas Served:** Yamhill County

[newberg.k12.or.us](http://newberg.k12.or.us)

### **Perrydale School District**

7445 Perrydale Rd. Amity, OR  
97101  
503-623-3184

**Hours:** Mon-Thurs 7am-4:30pm

**Areas Served:** Polk and Yamhill  
Counties

[perrydale.k12.or.us](http://perrydale.k12.or.us)

### **Sheridan School District**

435 South Bridge St. Sheridan,  
OR 97360  
971-261-6959

**Hours:** Mon-Fri 8am-5pm

**Areas Served:** Polk and  
Yamhill Counties

[sheridan.k12.or.us](http://sheridan.k12.or.us)

### **Willamina School District**

1100 NE Oaken Hill Dr.  
Willamina, OR  
503-876-4525

**Hours:** Mon-Fri 8am-5pm

**Areas Served:** Polk and Yamhill  
Counties

[willamina.k12.or.us](http://willamina.k12.or.us)

### **Yamhill-Carlton School District**

120 N Larch Place Yamhill, OR  
97148  
503-852-6980

**Hours:** Mon-Fri 7:30am-4pm

**Areas Served:** Yamhill County

[ycsd.k12.or.us](http://ycsd.k12.or.us)

# COMMUNITY RESOURCES

## FAMILY ENGAGEMENT

## EARLY LEARNING



### **Child Care Resource & Referral**

2475 Center St. NE Salem, OR  
503-585-2491

**Hours:** Mon-Fri 8am-5pm

**Resources:** Provides Training and Connections with Child Care Providers

**Eligibility:** Open to everyone

**Areas Served:** Polk, Marion, and Yamhill Counties

[mwvcaa.org/programs/child-care-resource-and-referral/contact-us/](http://mwvcaa.org/programs/child-care-resource-and-referral/contact-us/)

### **Grand Ronde Head Start Preschool**

9615 Grand Ronde Rd. Grand Ronde, OR  
503-879-1434

**Resources:** Early Childhood Education and Family Support

**Eligibility:** Low income Grand Ronde residents in Willamina and Polk County

**Areas Served:** Polk and Yamhill Counties

[preschoolhub.org/business/grand-ronde-head-start-preschool/](http://preschoolhub.org/business/grand-ronde-head-start-preschool/)

### **Head Start of Yamhill County**

1006 NE 3rd St. Ste A  
McMinnville, OR  
503-472-2000

**Hours:** Mon-Fri 8am-4:30pm

**Resources:** Home Visiting, Parenting Classes, Family Support, Leadership & Employment, Head Start

**Eligibility:** Pregnant women, children ages

0-5, income based

**Areas Served:** Yamhill County  
[yamhillheadstart.org](http://yamhillheadstart.org)

### **Oregon Child Development Coalition**

535 G St. Independence, OR  
97351

503-838-2745

**Hours:** Mon-Fri 8am-4:30pm

**Resources:** Early Head Start, Head Start, Migrant Family Programs

**Eligibility:** Income limits, agricultural income requirements

**Areas Served:** Polk, Marion, and Yamhill Counties

[ocdc.net](http://ocdc.net)

### **Willamette ESD**

2045 SW Hwy 18, Suite 100  
McMinnville, OR 97128  
503-435-5900

**Hours:** Mon-Fri 7:30am-4:30pm

**Resources:** Early Intervention, Early Childhood Special Education

**Eligibility:** Diagnosed developmental learning disability required

**Areas Served:** Yamhill County  
[wesd.org](http://wesd.org)

### **Yamhill Enrichment Society**

638 NE 5th St. McMinnville, OR  
97128

503-883-9654

**Hours:** Mon-Fri 8am-5pm

**Resources:** Free Early Literacy Program, Imagination Library

**Eligibility:** Available to children under 5

**Areas Served:** Yamhill County  
[yamhillenrichmentsociety.org](http://yamhillenrichmentsociety.org)

# COMMUNITY RESOURCES

## FAMILY ENGAGEMENT

## FAMILY ACTIVITIES



### **Acres of Hope Youth Ranch**

6665 Rickreall Rd,  
Independence OR 97351  
503-851-4051

**Hours:** Mon-Fri 9am-12p, & 2-5pm

**Resources:** Youth Mentoring Programs with Horses & Archery, Parent Mentoring

**Eligibility:** All Children Age 12-19

[acresofhopeyouthranch.org](http://acresofhopeyouthranch.org)

### **Amity Public Library**

307 Trade St. Amity, OR 97101  
503-835-8181

**Hours:** Tues-Fri 1pm-5pm, Sat 10am-2pm

**Resources:** Reading Materials

**Eligibility:** Open to the public  
[cityofamityoregon.org/library](http://cityofamityoregon.org/library)

### **Chehalem Aquatic Center**

1802 Haworth Ave. Newberg, OR 97132  
503-538-7454

**Hours:** Mon-Fri 5:15am-9pm, Sat 8am-\*pm, Sun 10am-5pm

**Resources:** Swimming

**Eligibility:** Open to the public  
[cprdnewberg.org/general/page/aquatic-fitness-center](http://cprdnewberg.org/general/page/aquatic-fitness-center)

### **Creating Opportunities**

777 13th Street SE, Suite 120  
Salem, OR 97301  
503-559-0424

**Hours:** Call for appointment

**Resources:** Provide support for families of children with disabilities or suspected disabilities

**Eligibility:** Open to all

**Areas Served:** Polk, Marion, and Yamhill Counties

[creatingops.org](http://creatingops.org)

### **Dallas Public Library**

950 Main St. Dallas, OR 97338  
503-623-2633

**Hours:** Mon/Tue 10am-6pm, Wed-Fri 10am-5pm, Sat 10am-2pm

**Resources:** Reading Materials, DVDs, Audio Books

**Eligibility:** Open to all

**Areas Served:** Polk, Marion, and Yamhill Counties  
[dallasor.gov/library](http://dallasor.gov/library)

### **Dallas Aquatic Center**

1005 SE LaCreole Dr. Dallas, OR 97338  
503-623-9715

**Hours:** Call for hours

**Resources:** Classes for Seniors and Youth

**Eligibility:** Open to all

**Areas Served:** Polk, Marion, and Yamhill Counties

[dallasor.gov/aquaticcenter](http://dallasor.gov/aquaticcenter)

### **Gilbert House Children's Museum**

116 Marion St NE, Salem OR 97301  
503-371-3631

**Hours:** Tues-Sun 10am-5pm

**Resources:** Hands-on exhibits and educational programs

**Eligibility:** Open to all

[acgilbert.org/](http://acgilbert.org/)

### **Kids, Inc.**

976 SW Hayter St. Dallas, OR 97338  
503-623-6419

**Hours:** Tues/Wed 1-5pm

**Resources:** Youth Sports

**Eligibility:** Open to the public

**Areas Served:** Polk, Marion, and Yamhill Counties

[dallaskidsinc.org](http://dallaskidsinc.org)

### **McMinnville Aquatic Center**

138 NW Park Dr. McMinnville, OR 97128  
503-434-7309

**Hours:** Mon/Wed/Fri 6:30pm-8pm, Sat 12pm-3pm

**Resources:** Swimming

**Eligibility:** Open to all

[mcminnvilleoregon.gov/aquatic](http://mcminnvilleoregon.gov/aquatic)



# COMMUNITY RESOURCES

## FAMILY ENGAGEMENT

## FAMILY ACTIVITIES



### **McMinnville Public Library**

225 NE Adams St, McMinnville,  
OR 97128  
503-435-5562

**Hours:** Tues/Wed 10am-7pm,  
Thurs/Fri 10am-6pm, Sat/Sun  
12pm-5pm

**Resources:** Reading Materials  
**Eligibility:** Open to all  
[mcminnvilleoregon.gov/library](http://mcminnvilleoregon.gov/library)

### **Monmouth Public Library**

168 Ecols St. S Monmouth, OR  
97361  
503-838-1932

**Hours:** Tues-Fri 10am-6pm, Sat  
10am-4pm

**Resources:** Reading Materials

**Eligibility:** Open to all

**Areas Served:** Polk, Marion, and  
Yamhill Counties  
[ci.monmouth.or.us](http://ci.monmouth.or.us)

### **Newberg Public Library**

503 E Hancock St. Newberg,  
OR 97132  
503-538-7323

**Hours:** Tues-Thurs 10am-8pm,  
Fri 12pm-6pm, Sat 10am-6pm

**Resources:** Reading Materials

**Eligibility:** Open to the public  
[newbergoregon.gov/library](http://newbergoregon.gov/library)

### **Scotty's Playhouse**

700 NW Hill Rd. McMinnville,  
OR 97128  
971-901-4060

**Hours:** Mon/Wed/Fri 2:45pm-  
4:45pm, Tues/Thurs 9am-11am

**Resources:** Indoor Playground

**Eligibility:** Free to all children  
under 12 years of age  
[scottysplayhouse.com](http://scottysplayhouse.com)

### **Sheridan Public Library**

142 NW Yamhill St. Sheridan,  
OR 97378  
503-843-3420

**Hours:** Tues-Sat 10am-6pm

**Resources:** Reading Materials

**Eligibility:** Open to the public  
[cityofsheridanor.com/library](http://cityofsheridanor.com/library)

### **Willamina Public Library**

382 NE C St. Willamina, OR  
97396  
503-876-6182

**Hours:** Mon-Thurs 11am-5pm

**Resources:** Reading Materials

**Eligibility:** Open to the public

[willaminaoregon.gov/departments/library/](http://willaminaoregon.gov/departments/library/)

# COMMUNITY RESOURCES

## FAMILY ENGAGEMENT

## FAMILY SUPPORT



### **5Rock Ranch**

23800 NW Flying M Rd.  
Yamhill, OR 97148  
503-662-5678

**Hours:** Hours vary contact staff for details

**Resources:** Respite, Camps, and Activities

**Eligibility:** Single Moms & Her kids

**Areas Served:** Open to All  
[5RockRanch.com](http://5RockRanch.com)

### **A Family Place - McMinnville**

125 Cows St. McMinnville, OR 97128  
503-472-4020

**Hours:** Thursdays 10am-12pm

**Resources:** Support for at risk families, home visiting, parent education, and specialized preschool ages 0-5

**Eligibility:** Contact our staff

**Areas Served:** Yamhill County  
[familyplacerelief.org](http://familyplacerelief.org)

### **A Family Place - Newberg**

1714 Villa Rd. Newberg, OR 97132  
503-472-4020

**Hours:** Mon-Fri 8:30am-4:30pm

**Resources:** Support for at risk families, home visiting, parent education, and specialized preschool ages 0-5

**Eligibility:** Contact our staff

**Areas Served:** Yamhill County  
[familyplacerelief.org](http://familyplacerelief.org)

### **Bear Hugs**

615 E 15th Ave. McMinnville, OR 97128  
503-565-4220

**Hours:** Mon-Fri 8am-5pm

**Resources:** Pregnancy and Child Care Information for McMinnville High School students

**Eligibility:** Teen Parents in McMinnville

School District  
**Areas Served:** Yamhill County

### **Fostering Hope**

3737 Portland Rd. NE Salem, OR 97307  
503-580-4672

**Hours:** Mon-Fri 8am-5pm

**Resources:** Support for Parents in Crisis and Safe Places for Children

**Eligibility:** Residents of Polk, Marion, and Yamhill Counties

**Areas Served:** Polk, Marion, and Yamhill Counties  
[safe-families.org](http://safe-families.org)

### **Lutheran Community Services**

435 NE Evans St. Suite A, McMinnville, OR 97128  
503-472-4020

**Hours:** Mon-Fri 8:30am-5pm

**Resources:** Strengthening parent-child relationships for healthy child growth and development.

**Eligibility:** Expectant families must enroll during pregnancy or before baby is 90 days old

**Areas Served:** Yamhill County  
[lcsnw.org](http://lcsnw.org)

### **Macey Elizabeth Foundation**

**Resources:** Provides Grief Support & Assistance to Families in Oregon who have Recently lost a child or have a child receiving end-of-life care.

**Eligibility:** Oregon families who have recently lost a child or have a child receiving end-of-life care referred by family or friends, healthcare providers, social workers or hospice care staff.

**Areas Served:** All of Oregon  
[maceyelizabethfoundation.com](http://maceyelizabethfoundation.com)

### **Mano a Mano Family Center**

2921 Saddle Club St SE, #1009, Salem, OR, 97317  
503-315-2290

**Hours:** Mon-Thurs 12am-6pm

**Resources:** Assistance with GED Completion, Citizenship, Parenting Skills, Classes, Career Changes, and Home Buying

**Eligibility:** All are welcome  
**Areas Served:** Polk, Marion, and Yamhill Counties  
[manoamanofc.org](http://manoamanofc.org)

### **McMinnville WIC**

412 NE Ford St. McMinnville  
503-434-6740

**Hours:** Mon 8am-6:30pm,  
Tues-Fri 8am-5pm

**Resources:** Health foods, nutrition education, breastfeeding support, and help navigating local resources

**Eligibility:** Pregnant, postpartum, infants, children up to age 5.

**Areas Served:** Yamhill County  
[saludwic.org](http://saludwic.org)

# COMMUNITY RESOURCES

## FAMILY ENGAGEMENT

## FAMILY SUPPORT



### **Newberg WIC**

2251 E Hancock St. #107  
Newberg, OR  
503-538-8779

**Hours:** Mon, Tues, Wed, Fri 8am-5pm, Thurs 8am-6pm

**Resources:** Health foods, nutrition education, and breastfeeding support

**Eligibility:** Pregnant, postpartum, infants, children up to age 5. Income requirements.

**Areas Served:** Yamhill County  
[yvwfc.com/locations/newberg-wic/](http://yvwfc.com/locations/newberg-wic/)

### **Oregon Child Development Coalition**

470 NE Norton Lane  
McMinnville OR 97128  
971-261-6134

**Hours:** Mon-Fri 8am-4:30pm

**Resources:** Parenting Classes & Family Support

**Eligibility:** Children 3-5 years of Age, have Parents who are Seasonal or Migrant Workers, Income Based

**Areas Served:** Yamhill County  
[ocdc.net](http://ocdc.net)

### **Oregon Family Support Network**

420 NE 5th St. McMinnville, OR 97128  
503-602-0461

**Hours:** Call for appointment

**Resources:** Peer support for family members within the wraparound process

**Eligibility:** Families with child/youth with physical, mental, emotional challenges

**Areas Served:** Yamhill County  
[ofsn.org](http://ofsn.org)

### **Safe Families for Children**

3500 River Road North Suite 2, Keizer, OR 97303  
503-580-4672

**Hours:** Mon-Fri 8am-5pm

**Resources:** Support for parent in crisis and safe place for children

**Areas Served:** Polk, Marion, and Yamhill Counties  
[safe-families.org](http://safe-families.org)

### **Yamhill County Public Health**

412 NE Ford St. McMinnville, OR 503-434-7525

**Hours:** Mon-Fri 8am-5pm

**Resources:** Provides Education, Development Tips, Breastfeeding Support, Nutrition, and Community Referrals

**Eligibility:** Families with children ages 0-5 with high risk health issues

**Areas Served:** Yamhill County  
[yamhillcounty.gov/561/Public-Health](http://yamhillcounty.gov/561/Public-Health)

### **Yamhill Valley Community Doulas**

609 NE Baker Street, McMinnville, Suite 110  
503-583-2607

**Hours:** 24 hours a day, 7 days a week

**Resources:** Birth and Postpartum Doula Care, Childbirth Education, and Peer Support Groups

**Eligibility:** Families Enrolled in OHP

**Areas Served:** Yamhill County  
[yamhillvalleycommunitydoulas.com](http://yamhillvalleycommunitydoulas.com)

# COMMUNITY RESOURCES

## FAMILY ENGAGEMENT

## PARENT EDUCATION



### **Head Start of Yamhill County**

813 NE 2nd Street McMinnville,  
OR 97128  
503-883-0076

**Hours:** Mon-Fri 8am-5pm  
**Resources:** Parenting Classes  
**Eligibility:** Open to all  
**Areas Served:** Yamhill County

[yamhillheadstart.org](http://yamhillheadstart.org)

### **Lutheran Community Services**

435 NE Evans St. Suite A,  
McMinnville, OR 97128  
503-472-4020

**Hours:** Mon-Fri 8:30am-5pm

**Resources:** Strengthening  
parent-child relationships for  
healthy child growth and  
development.

**Eligibility:** Expectant families  
must enroll during pregnancy or  
before baby is 90 days old

**Areas Served:** Yamhill County  
[lcsnw.org](http://lcsnw.org)

### **Mid-Valley Parenting**

807 NE 3rd St. McMinnville, OR  
97128  
503-376-7421

**Hours:** Mon-Fri 8am-5pm

**Resources:** Parenting  
Classes/Assistance

**Eligibility:** Prenatal and  
families parenting children 0-5  
years

**Areas Served:** Yamhill County  
[midvalleyparenting.org](http://midvalleyparenting.org)

### **Salem CHEC**

939 Oak St. SE Salem, OR 97302  
503-814-2432

**Hours:** Mon-Fri 8am-5pm

**Resources:** Full service health  
education center, with classes,  
library and wellness kitchen.  
Provides Childbirth Education,  
Breastfeeding Support, and  
Infant CPR classes

**Eligibility:** Open to all  
[salemhealth.org/community-  
health-education-center](http://salemhealth.org/community-health-education-center)

# COMMUNITY RESOURCES

## HEALTH & WELLNESS

### DENTAL



#### **Gentle Dental - McMinnville**

2275 NE 27th Street, STE A,  
McMinnville, OR 97128  
503-902-5943

**Hours:** Mon-Fri 7:30am-5:30pm

**Resources:** Dental Care  
**Eligibility:** Accepts most insurance plans.

**Areas Served:** Polk and Yamhill Counties  
[dentalclinic.oit.edu](http://dentalclinic.oit.edu)

#### **Grand Ronde Tribal Clinic**

9605 Grand Ronde Rd. Grand Ronde, OR  
503-879-2002

**Hours:** Mon-Fri 8am-5pm

**Resources:** Dental Treatment

**Eligibility:** Those who are connected to the Grand Ronde Tribe

**Areas Served:** Polk and Yamhill Counties  
[grandronde.org](http://grandronde.org)

#### **Love, Inc.**

200 College St. Newberg, OR 97132  
503-537-3999

**Hours:** Mon-Thurs 10am-1pm

**Resources:** Dental Van

**Eligibility:** Resources provided to Love Inc client. Please call to sign up.

**Areas Served:** Yamhill County  
[loveincnewberg.org](http://loveincnewberg.org)

#### **Virginia Garcia Clinic**

3305 NE Alclek Drive  
Hillsboro, OR 97124  
503-352-8610

**Hours:** Mon-Thurs 7am-6pm

**Resources:** Dental Care, School Based Dental Van

**Eligibility:** Children ages 0-21

**Areas Served:** Polk and Yamhill Counties  
[viriniagarcia.org](http://viriniagarcia.org)

#### **Virginia Garcia Clinic Newberg**

2251 E Hancock St Suite 103  
Newberg, OR 97132  
971-281-3000

**Hours:** Mon-Thurs 7am-6pm

**Resources:** Comprehensive Dental Care

**Eligibility:** Low income guidelines

**Areas Served:** Yamhill County  
[viriniagarcia.org/locations/newberg-clinic/](http://viriniagarcia.org/locations/newberg-clinic/)

#### **Willamina School Based Health Center**

1100 NE Oaken Hills Drive  
Willamina, OR 97136  
503-876-8564

**Hours:** Mon-Wed, Fri 8am-5pm

**Resources:** Comprehensive Dental Care

**Eligibility:** Open to all members of the Willamina School District

**Areas Served:** Polk and Yamhill Counties  
[viriniagarcia.org/locations/willamina-schools/](http://viriniagarcia.org/locations/willamina-schools/)

# COMMUNITY RESOURCES

## HEALTH & WELLNESS

MEDICAL



### **American Red Cross**

1860 Hawthorne Ave. NE  
Salem, OR 97301  
503-585-5414

**Hours:** Mon-Fri 8am-5pm

**Resources:** Emergency Resources Following a Disaster

**Eligibility:** Available to anyone affected by a disaster

**Areas Served:** Polk, Marion, and Yamhill Counties

[redcross.org](http://redcross.org)

### **Children's Cancer Association**

1200 NW Naito Pkwy Suite 140  
Portland, OR  
503-244-3141

**Hours:** Mon-Thurs 8am-5pm, Fri 8am-12pm

**Resources:** Provides Families with Essential Needs, Assistance, and Support

**Eligibility:** Children with serious or life threatening illness

**Areas Served:** Polk, Marion, and Yamhill Counties

[joyrx.org](http://joyrx.org)

### **Grand Ronde Tribal Clinic**

9605 Grand Ronde Rd. Grand Ronde, OR  
503-879-2078

**Hours:** Mon-Fri 8am-5pm

**Resources:** Primary Care, Referrals, Patient Education, Family Planning, and Preventative Services

**Eligibility:** Those connected to the Grand Ronde Tribe

**Areas Served:** Polk and Yamhill Counties

[grandronde.org](http://grandronde.org)

### **Newberg FISH Emergency Services**

125 S Elliott Rd Suite A,  
Newberg, OR 97132  
503-538-4444

**Hours:** Mon-Tues, Thurs 10am-1pm

**Resources:** Emergency Dental, Prescription, and Lodging Vouchers

**Areas Served:** Newberg and Dundee

[newbergfish.org](http://newbergfish.org)

### **Options Pregnancy Resource Center**

Mobile clinic serving in Monmouth & Independence  
541-924-0160

**Hours:** See Website for mobile clinic hours

**Resources:** Pregnancy testing and ultrasounds to confirm pregnancy. Options discussion and resource referrals.

**Eligibility:** Women in child-bearing years

**Areas Served:** Marion and Yamhill Counties

[www.optionsprc.org](http://www.optionsprc.org)

### **Oregon Health Insurance Marketplace**

500 Summer Street, Salem, OR, 97301  
855-268-3767

**Hours:** Mon-Fri 8am to 5pm

**Resources:** Assistance finding insurance coverage

**Eligibility:** Open to all

**Areas Served:** All Oregon Residents

[healthcare.oregon.gov](http://healthcare.oregon.gov)

### **People's Community Clinic of Newberg**

1014 North Springbrook Rd, Ste B Newberg, OR 97132  
503-449-8988

**Hours:** Wed-Sat 9am-7pm

**Resources:** Primary Care

**Eligibility:** Open to All

**Areas Served:** Marion and Yamhill Counties

[peoplescommunityclinicofnewberg.org](http://peoplescommunityclinicofnewberg.org)

### **Salem Health-Rehabilitation Center**

755 Mission St SE, Salem, OR 97301 Building M  
503-814-5986

**Hours:** Mon- Fri 7am-5pm

**Resources:** Rehabilitation

**Eligibility:** OHP, Most private insurances

**Areas Served:** Polk, Marion, and Yamhill Counties

[salemhealth.org/services/rehabilitation](http://salemhealth.org/services/rehabilitation)

### **Salem Health Urgent Care**

1002 Bellevue St. SE Salem, OR 97301  
503-814-5554

**Hours:** 7 days a week 9:30am-8pm

**Resources:** Urgent Care

**Eligibility:** OHP, Most private insurances

**Areas Served:** Polk, Marion, and Yamhill Counties

[salemhealth.org/services/urgent-care](http://salemhealth.org/services/urgent-care)



# COMMUNITY RESOURCES

## HEALTH & WELLNESS

MEDICAL



### **Salem VA Clinic**

1750 McGilchrist Street  
Southeast, Suite 130  
Salem, OR 97302  
971-304-2200

**Hours:** Mon-Fri 7:30am-4:30pm

**Resources:** Primary Care, Mental Health, Physical Therapy, Lab, Optometry, Veteran's Transportation Service

**Eligibility:** Veterans. Bring DD214, benefits letter, monthly income

**Areas Served:** Polk, Marion, and Yamhill Counties  
[va.gov](http://va.gov)

### **Virginia Garcia Clinics**

115 NE May Lane McMinnville  
503-472-1338

**Hours:** Mon, Wed 8am-5pm,  
Tues, Thurs 10am-7pm

**Resources:** Birth Control Counseling, Childhood Immunizations, Community Clinics, General Care

**Eligibility:** Sliding Fee Scale, Medicaid, Open Card, Medicare, OHP, Private Insurance

**Areas Served:** Yamhill County  
[viriniagarcia.org](http://viriniagarcia.org)

### **Willamina School Based Health Center**

1100 NE Oaken Hills Dr.  
Willamina, OR  
503-876-8564

**Hours:** Tues, Wed, Fri 8am-5pm

**Resources:** Primary Care Services

**Eligibility:** Open to all members of the Willamina School District during the school year. Ages 4-20

**Areas Served:** Yamhill County  
[viriniagarcia.org](http://viriniagarcia.org)

### **Yamhill County Public Health**

412 NE Ford St. McMinnville, OR  
503-434-7525

**Hours:** Mon-Fri 8am-5pm

**Resources:** Tobacco Prevention & Education, Family Planning, HIV Services, Food Handlers Services, and Child Services

**Eligibility:** Eligibility varies with programs

**Areas Served:** Yamhill County  
[yamhillcounty.gov/561/Public-Health](http://yamhillcounty.gov/561/Public-Health)

### **Yamhill Community Care**

819 NE Third Street,  
McMinnville, OR, 97128  
855-722-8205

**Hours:** Mon-Fri 8am-5pm

**Resources:** Physical, Dental, and Behavioral Health Services

**Eligibility:** OHP

**Areas Served:** Yamhill County  
[yamhillcco.org](http://yamhillcco.org)

# COMMUNITY RESOURCES

## HEALTH & WELLNESS

## MENTAL HEALTH & ADDICTION



### **Alcoholics Anonymous**

687 Cottage St. NE Salem, OR 97301  
503-399-0599

**Hours:** Varies. Schedule at [aa-salem.com](http://aa-salem.com)

**Resources:** Peer Support with Maintenance of Sobriety

**Eligibility:** Open to all

**Areas Served:** Polk, Marion, and Yamhill Counties

**[aa-salem.com](http://aa-salem.com)**

### **Chehalem Youth & Family**

100 E 5th St, Newberg, OR 97132  
503-538-4874

**Hours:** Mon-Fri 8:30am-5pm

**Resources:** Counseling, Youth Services, Therapeutic Groups, and Educational Support. Supervised Parenting Services.

**Eligibility:** Accepts OHP and some major insurances. Sliding fee available.

**Areas Served:** Yamhill County  
**[cyfs.net](http://cyfs.net)**

### **Community Medical Services**

702 Church St NE, Salem, OR 503-991-5903

**Hours:** Mon-Sat 5am-4pm

**Resources:** Outpatient Medication-Assisted Treatment, Counseling and Support Services

**Eligibility:** Accepts Most Insurances, Provides Services to those Suffering from Addiction

**Areas Served:** Polk, Marion, and Yamhill Counties

**[communitymedicalservices.org](http://communitymedicalservices.org)**

### **Compass Perinatal Support**

971-301-2678  
Dallas- Bambinos 322 Main St. #200 Dallas, OR, 97338

**Hours:** Dallas: Wed 10:30am-12pm

Salem: Fri 10:30pm-12pm

**Resources:** Free Pregnancy & Postpartum Support

**Eligibility:** Parents

**Areas Served:** Yamhill, Polk & Marion Counties

**[compasspps.com](http://compasspps.com)**

### **Connections Counseling Center**

4035 12th St. Cutoff SE #140 Salem, OR 971-600-2714

**Hours:** Mon-Fri 9am-5pm

**Resources:** Full Range of Mental Health Services

**Eligibility:** Accepts most insurances, please call to verify

**Areas Served:** Polk, Marion, and Yamhill Counties

**[therapytreatmentsalem.com](http://therapytreatmentsalem.com)**

### **Fostering Hope Initiative Woodmansee**

Bishop Steiner Building 3737 Portland Rd NE, Salem, OR 97301  
503-390-2600

**Hours:** Residential Specialist Onsite 24 Hours Per Day

**Resources:** Intensive Wrap Around Services

**[ccswv.org](http://ccswv.org)**

### **Ideal Option**

675 Orchard Heights Rd NW Ste 180, Salem OR 97304  
877-522-1275

**Hours:** Mon-Thurs 7:30am-6pm

**Resources:** Outpatient Drug & Alcohol Addiction Services & Relapse Prevention

**Eligibility:** Accepts Medicaid, and Most Private Insurances. Serves Low-Income Households

**Areas Served:** Residents of Oregon

**[idealoption.com](http://idealoption.com)**

### **Marion County Adult Mental Health**

3180 Center St. NE Salem, OR 97301  
503-588-5351

**Hours:** Mon-Fri 8am-5pm

**Resources:** Mood Disorders, Anxiety, Trauma Related Issues

**Eligibility:** Accepts OHP and Private Insurance

**Areas Served:** Polk, Marion, and Yamhill Counties

**[co.marion.or.us](http://co.marion.or.us)**

### **Marion County Children's Behavioral Health**

3867 Wolverine St. NE Bldg F, Salem, OR 97305  
503-588-5352

**Hours:** Mon, Tues, Thurs 8am-7pm. Wed. Fri 8am-5pm

**Resources:** Outpatient Services, Juvenile Justice Programs

**Eligibility:** Accepts OHP and Private Insurance

**Areas Served:** Polk, Marion, and Yamhill Counties

**[co.marion.or.us/HLT/MH/Pages/cbh.aspx](http://co.marion.or.us/HLT/MH/Pages/cbh.aspx)**

# COMMUNITY RESOURCES

## HEALTH & WELLNESS

## MENTAL HEALTH & ADDICTION



### **Marion County Alcohol & Drug Treatment**

2045 Silverton Rd. NE Salem, OR  
503-576-4660

**Hours:** Mon-Fri 8am-5pm

**Resources:** Adult Services, DUI Services, Outpatient Services, Counseling

**Eligibility:** Accepts OHP and Private Insurance

**Areas Served:** Polk, Marion, and Yamhill Counties

[rehab.com/marion-county-alcohol-and-drug-treatment](http://rehab.com/marion-county-alcohol-and-drug-treatment)

### **Marion County Her Place**

503-362-1399

**Hours:** 24 Hours Support

**Resources:** Assessments, Outpatient Services, Mentor Services, Safety Service Provider, Court Advocacy

**Eligibility:** Accepts OHP and Private Insurance

**Areas Served:** Polk, Marion, and Yamhill Counties

[co.marion.or.us/HLT/ATS/Page/s/her-place.aspx](http://co.marion.or.us/HLT/ATS/Page/s/her-place.aspx)

### **Marion County Woodburn Services**

976 N Pacific Hwy Woodburn  
503-981-5851

**Hours:** Mon-Fri 8am-5pm

**Resources:** Adult and Adolescent Treatment Services, Assessments, Outpatient Services, DUI Services

**Eligibility:** Accepts OHP and Private Insurance

**Areas Served:** Polk, Marion, and Yamhill Counties

[co.marion.or.us/HLT/rural/Pages/wdburn.aspx](http://co.marion.or.us/HLT/rural/Pages/wdburn.aspx)

### **Marion County Psychiatric Crisis Center**

1118 Oak St. SE Salem, OR 97301  
503-585-4949

**Hours:** 24/7

**Resources:** Provides in Person Crisis Intervention

**Eligibility:** Adults experiencing impairments in daily functions due to mental health crisis. OHP and Private Insurance accepted.

**Areas Served:** Polk, Marion, and Yamhill Counties

[co.marion.or.us/HLT/MH/pcc](http://co.marion.or.us/HLT/MH/pcc)

### **McMinnville Cooperative Ministries**

544 NE 2nd St. McMinnville, OR 97128  
503-472-5622

**Hours:** Tues, Thurs 9am- 12pm

**Resources:** 12 Step Literature

**Eligibility:** Self Referrals

**Areas Served:** Polk, Marion, and Yamhill Counties

[mac-coop.org](http://mac-coop.org)

### **Medication Assisted Treatment Services**

2045 Silverton Rd NE Salem, OR  
503-588-5358

**Hours:** Mon-Fri 8am-5pm

**Resources:** Outpatient Substance Treatment and Therapies

**Eligibility:** Call to determine eligibility and availability of services.

**Areas Served:** Polk, Marion, and Yamhill Counties

[co.marion.or.us/HLT/pages/aanddd.aspx](http://co.marion.or.us/HLT/pages/aanddd.aspx)

### **Narcotics Anonymous**

503-990-0861

**Hours:** 24 Hr. Helpline

**Resources:** Peer Support

**Eligibility:** Anyone

**Areas Served:** Polk, Marion, and Yamhill Counties

[mwvana.org](http://mwvana.org)

### **OPGR- Oregon Problem Gambling Resource**

**Confidential Help:** 1-877-695-4648

**National Hotline:** 1-800-662-1644

**Live Chat:** 9am-9pm

**Text:** 503-713-6000 Mon-Fri 9am-9pm

[opgr.org](http://opgr.org)

### **Polk County Recovery Outreach Community Center**

945 SE Uglow Ave, Dallas, OR.  
Office: : 503-837-1762

Resource Navigation: 971-718-8668

**Hours:** Wed-Mon 10am-5pm  
Tues. 12-5pm

**Resources:** Peer Support, Resource Navigation, Support Groups, Laundry, Showers, & Food

**Eligibility:** Adults 18+

[roccsalem.org](http://roccsalem.org)

# COMMUNITY RESOURCES

## HEALTH & WELLNESS

## MENTAL HEALTH & ADDICTION



### **Project Able**

1599 State St. Salem, OR 97301  
503-363-3260

**Hours:** Mon-Fri 9am-5pm

**Resources:** Peer Support Services to People with Mental Health and Co-Occurring Issues

**Eligibility:** Services are free to individuals 18 and older  
[projectable.org](http://projectable.org)

### **Provoking Hope**

213 NE 10th McMinnville, OR 97128  
971-261-2259

**Hours:** Mon-Fri 8am-5pm

**Resources:** Addiction Recovery

**Eligibility:** Accepts OHP and Private Pay  
[provokinghope.com](http://provokinghope.com)

### **Recovery Works NW**

308 N Villa Rd, Newberg, OR 97132  
503.906.9995

**Hours:** Mon-Thurs 9am-5pm; Fri 9am-3:30pm

**Resources:** Medication for Addictions, Peer Support, Withdrawal Management, Outpatient Treatment, and DUI.

**Eligibility:** Most insurances including OHP Accepted  
**Areas Served:** All Counties  
[recoveryworksnw.com](http://recoveryworksnw.com)

### **Salem Free Clinics**

1300 Broadway St NE Suite #104, Salem, OR 97301  
503-990-8772

**Hours:** Mon-Fri 8am-5pm

**Resources:** Mental Health Services

**Eligibility:** Sliding Fee Scale

**Areas Served:** Polk, Marion, and Yamhill Counties  
[salemfreeclinics.org](http://salemfreeclinics.org)

### **Salem Pastoral Counseling**

2001 Commercial St SE, Salem, OR 97302  
503-370-8050

**Hours:** Mon-Fri 8am-5pm

**Resources:** Provides Counseling for a Variety of Issues

**Eligibility:** Accepts most insurance plans.

**Areas Served:** Polk, Marion, and Yamhill Counties  
[salempastoralcounseling.org](http://salempastoralcounseling.org)

### **Valley Mental Health**

821 Saginaw St S, Salem, OR 97302  
503-589-4046

**Hours:** Mon-Fri 8am-4:30pm

**Resources:** Individual and Group Setting

**Eligibility:** Call for information

**Areas Served:** Polk, Marion, and Yamhill Counties  
[valleymental.com](http://valleymental.com)

### **Yamhill County Chemical Dependency**

627 NE Evans St. McMinnville, OR 97128  
503-434-7527

**Hours:** Mon-Fri 7:30am-6pm

**Resources:** Adult Programs, Chemical Dependency Counseling

**Eligibility:** Accepts OHP and Private Insurance

**Areas Served:** Yamhill County  
[rehabs.org/yamhill-county-chemical-dependency/](http://rehabs.org/yamhill-county-chemical-dependency/)

### **Yamhill County Youth & Family**

420 NE 5th St. McMinnville, OR 97128  
503-434-7462

**Hours:** Mon-Fri 8am-5pm

**Resources:** Counseling for Children

**Eligibility:** Accepts OHP and Private Insurance

**Areas Served:** Yamhill County  
[yamhillcounty.gov/1080/Youth-Services](http://yamhillcounty.gov/1080/Youth-Services)

### **Yamhill County Adult Mental Health**

627 NE Evans St. McMinnville, OR 97128  
503-434-7527

**Hours:** Mon-Fri 8am-5pm

**Resources:** Counseling and Medication Management

**Eligibility:** Accepts OHP and Private Insurance

**Areas Served:** Yamhill County  
[yamhillcounty.gov/204/Health-Human-Services](http://yamhillcounty.gov/204/Health-Human-Services)

# COMMUNITY RESOURCES

## HEALTH & WELLNESS

## PET RESOURCES



### **Family Promise of the Mid-Willamette Valley**

1055 Edgewater St NW, Salem,  
OR 97304  
503-370-9752

**Hours:** Mon-Fri 9-4pm

**Resources:** Pet Friendly Human  
Shelter

**Eligibility:** Open to families  
and animals experiencing  
homelessness

**Areas Served:** Residents of  
Willamette Valley with pets  
[familypromisemwv.org](http://familypromisemwv.org)

### **Liberty Animal Hospital**

4555 Liberty Road S #120,  
Salem, OR, 97302  
503-339-7065

**Hours:** Mon/Tue 9am-5:30;  
Thu-Sat 9am-5:30 pm

**Resources:** Offers Grants,  
Subsidies, or Vouchers for pet  
care

**Eligibility:** varies based on  
case

**Areas Served:** Residents of  
Oregon with pets

### **Oregon Humane Society - Salem**

4246 Turner Road SE, Salem,  
OR, 97317  
503-585-5900

**Hours:** Mon-Sun 10am-7pm

**Resources:** Low cost dog and  
cat training classes, low cost  
veterinary clinic, and support  
for animal medical expenses

**Eligibility:** varies based on  
case

**Areas Served:** Residents of  
Oregon with pets



# COMMUNITY RESOURCES

## HEALTH & WELLNESS

## SENIOR & DISABILITY



### **Aging & Disability Resource Connection**

3140 Cherry Ave NE Keizer, OR 97303  
503-304-3420

**Hours:** Mon-Fri 8am-5pm

**Resources:** Alzheimer's and Dementia Care, Support, Education, and Resources

**Eligibility:** Resources for Everyone

**Areas Served:** Polk, Marion, and Yamhill Counties  
[adrcoforegon.com](http://adrcoforegon.com)

### **Alzheimer's Association of Oregon**

5285 Meadows Rd, Lake Oswego, OR 97035  
800-272-3900

**Hours:** Mon 8:30am-5pm, Tues/Thurs 8:30am-1pm

**Resources:** Alzheimer's and Dementia Care, Support, Education, and Resources

**Eligibility:** Open to everyone

**Areas Served:** Polk, Marion, and Yamhill Counties  
[alz.org/oregon](http://alz.org/oregon)

### **Chehalem Senior Center**

101 W Foothills Dr. Newberg, OR 97132  
503-537-9404

**Hours:** Mon-Fri 9am-3pm

**Resources:** Programs for Seniors, Meals on Wheels, Activities and Support Services

**Eligibility:** Older adults in Newberg and surrounding areas

**Areas Served:** Yamhill County  
[cprdnewberg.org](http://cprdnewberg.org)

### **Community Connections**

310 Villa Rd. Ste 110 Newberg, OR 97132  
503-537-9404

**Hours:** Mon-Fri 8:30am-4:30pm

**Resources:** Volunteers to help address unmet health needs at the medical center and in the community

**Eligibility:** Older adults, children with special needs

**Areas Served:** Yamhill County  
[providence.org/locations/or/newberg-medical-center?](http://providence.org/locations/or/newberg-medical-center?)

### **FACT Oregon**

2475 SE Ladd Ave Ste. 430 Portland, OR  
503-786-6082

**Hours:** Mon-Fri 9am-4pm

**Resources:** Support for families navigating disability service and supports. Understanding special education services.

**Eligibility:** Open to those experiencing a disability and their families

**Areas Served:** Polk, Marion, and Yamhill Counties  
[factoregon.org](http://factoregon.org)

### **Lions Club**

500 NW Hill Rd Suite 200, McMinnville, OR 97128  
503-435-5466

**Hours:** Mon 11am-1pm Tues/Fri 10am-12pm

**Resources:** Free Durable Medical Equipment (DME) Products

**Eligibility:** Yamhill County Residents

**Areas Served:** Yamhill County  
[e-clubhouse.org/sites/mcminnville\\_or/](http://e-clubhouse.org/sites/mcminnville_or/)

### **McMinnville Senior Center**

2250 NE McDaniel Ln. McMinnville, OR  
503-435-0407

**Hours:** Mon-Thurs 9am-8pm

**Resources:** Activities, Support, Resources, and Meal Sites for Seniors

**Eligibility:** Older adults in McMinnville and surrounding areas

**Areas Served:** Yamhill County  
[mcminnvilleoregon.gov/seniorcenter](http://mcminnvilleoregon.gov/seniorcenter)

### **MV Advancements**

2275 NE McDaniel Ln McMinnville, OR 97128  
503-835-2971

**Hours:** Mon-Fri 8am-5pm

**Resources:** Provides Employment, Residential Support, and Transportation

**Eligibility:** Adults with Disabilities

**Areas Served:** Yamhill County  
[mvadvancements.org](http://mvadvancements.org)

### **Northwest Senior & Disability Services**

300 SW Hill Rd. McMinnville, OR  
503-472-9441

**Hours:** Mon-Fri 8am-5pm

**Resources:** Free or Low Cost Services to Seniors and People with Disabilities and their Family Caregivers

**Eligibility:** Polk, Marion, and Yamhill Counties

**Areas Served:** Yamhill County  
[nwsds.org](http://nwsds.org)



# COMMUNITY RESOURCES

## HEALTH & WELLNESS

### SENIOR & DISABILITY



#### **Oregon Commission For The Blind**

535 SE 12th Ave, Portland, OR 97214

971-673-1588

**Hours:** Mon-Fri 8am-5pm

**Resources:** Offers Education, Assistance, and Equipment

**Eligibility:** Programs for adults who are legally blind or with diagnosed visual impairments

**Areas Served:** Polk, Marion, and Yamhill Counties

[oregon.gov/BLIND/Pages/index.aspx](http://oregon.gov/BLIND/Pages/index.aspx)

#### **Oregon Senior Health Insurance Benefits Assistance (SHIBA)**

800-722-4134

**Hours:** 24/7 Support

**Resources:** Offers Education, Assistance, and Advocacy for Individuals

**Eligibility:** Medicare beneficiaries and their family members or caregivers

**Areas Served:** All Oregon Residents

[shiba.oregon.gov/Pages/index.aspx](http://shiba.oregon.gov/Pages/index.aspx)

#### **Providence Community Connection**

310 Villa Rd. Ste 110 Newberg 503-537-1549

**Hours:** Mon-Fri 8:30am-4:30pm

**Resources:** Volunteers assist with light housekeeping, minor home repairs, errands, visiting, etc.

**Eligibility:** 60+, lower income and health or aging issue that jeopardizes ability to live independently

**Areas Served:** Marion and Yamhill Counties

[providence.org](http://providence.org)

#### **Yamhill Community Action Partnership**

1317 NE Dustin Ct. McMinnville, OR 97128

503-472-0457

**Hours:** Mon-Fri 8:30am-5pm

**Resources:** YCAP Elderly Assistance Fund, One Time Financial Assistance

**Eligibility:** Seniors (60+)

**Areas Served:** Yamhill County

[yamhillcap.org](http://yamhillcap.org)

# COMMUNITY RESOURCES

## HEALTH & WELLNESS



### **NewEyes**

Application can be found at:  
<https://new-eyes.org/application>

**Resources:** Eye Healthcare & Glasses

**Eligibility:** Low-Income Individuals between ages 18-55. Applicants must have an eyeglasses prescription dated within the last 24 months.

**Areas Served:** Residents of Oregon

### **Oregon Lions Sight and Hearing Foundation**

1010 NW 22nd Ave Suite 144  
Portland, OR  
503-413-7399

**Hours:** Mon-Fri 9am-5pm

**Resources:** Helps finance eye and ear surgeries for individuals who cannot afford needed treatments

**Eligibility:** Oregon residents for 2+ years, Income based

**Areas Served:** Polk, Marion, and Yamhill Counties

[olshf.org](http://olshf.org)

# COMMUNITY RESOURCES

## HOUSING & HOMELESS

## SHELTERS & SERVICES



### **2nd Street Community Church**

504 E 2st. St. Newberg, OR 97132  
503-538-9761

**Hours:** Mon-Fri 9:30am-12pm

**Resources:** Day Shelter, Meals, Showers, Hygiene Supplies, Telephone, Laundry, Community Mailbox

**Eligibility:** Homeless or at risk  
**Areas Served:** Yamhill County  
[2ndstreet.org](http://2ndstreet.org)

### **Helping Hands Re-Entry Outreach**

971-333-5070

**Hours:** Mon-Fri 8:30am-4:30pm

**Resources:** 15 Bed Facility for Women and Children. 25 Bed Facility for Men

**Eligibility:** Must Complete Intake

**Areas Served:** Yamhill County  
[helpinghandsreentry.org](http://helpinghandsreentry.org)

### **Henderson House**

610 SE 1st St. McMinnville, OR 97128  
503-472-0244

**Hours:** Mon-Fri 9am-5pm

**Resources:** Emergency Crisis Shelter for Women and Children

**Eligibility:** Shelter for women and children leaving domestic violence

**Areas Served:** Yamhill County  
[hendersonhouse.org](http://hendersonhouse.org)

### **WestCare Veterans Home & Resource Center**

2933 Center St. NE Salem, OR 503-364-1728

**Hours:** Mon-Fri 8am-5pm

**Resources:** Group Home, Case Management, Showers, Laundry

**Eligibility:** Homeless Veterans, >40 Days clean and sober. No convictions related to violence, sex crimes, or arson.

[westcare.com](http://westcare.com)

### **Yamhill Community Action Partnership**

1317 NE Dustin Ct. McMinnville, OR 97128  
503-472-0457

**Hours:** Mon-Fri 8:30am-5pm

**Resources:** Emergency Shelter, Rent & Energy Assistance, Food Bank, Weatherization, Youth Programs

**Eligibility:** Income Based  
**Areas Served:** Yamhill County  
[yamhillcap.org](http://yamhillcap.org)

### **Yamhill County Gospel Rescue Mission**

1340 NE Logan St. McMinnville, OR 97128  
503-472-9766

**Hours:** 24 hrs a day/7 days a week

**Resources:** Shelter, Clothing, Showers, and Hygiene Items

**Eligibility:** Homeless Individuals  
**Areas Served:** Yamhill County  
[ycgrm.org](http://ycgrm.org)

# COMMUNITY RESOURCES

## HOUSING & HOMELESS



### **Community Home Builders**

2195 NE 27th St. McMinnville,  
OR 97128

503-434-5265

**Hours:** 8:30am-5pm

**Resources:** Housing program  
where a group of families work  
together to build others home  
in a rural community

**Eligibility:** Income based. Your  
"sweat equity" is required.

**Areas Served:** Yamhill County  
[communityhomebuilders.org](http://communityhomebuilders.org)

### **Confederated Tribes of Grand Ronde**

9615 Grand Ronde Rd. Grand  
Ronde, OR

503-879-5211

**Hours:** Mon-Fri 8am-5pm

**Resources:** Home Repair,  
Medical Adaptation Grants,  
Down Payment Assistance  
Grants, Section 8

**Eligibility:** Available to  
qualified Tribal Members

**Areas Served:** Polk and Yamhill  
Counties  
[grandronde.org](http://grandronde.org)

### **Habitat for Humanity**

1024 SE 1st St. McMinnville, OR  
97128

503-472-9637

**Hours:** Mon-Fri 10am-4pm

**Resources:** Habitat Homes are  
built with volunteer labor and  
donated materials.

**Eligibility:** Attend an  
orientation to learn how to  
apply.

**Areas Served:** Yamhill County  
[machabitat.org](http://machabitat.org)

### **Housing Authority of Yamhill County**

135 NE Dunn Place McMinnville,  
OR 97128

503-883-4300

**Hours:** Mon-Thurs 8am-5pm

**Resources:** Section 8, Farm  
Worker Housing, Home  
Ownership, Home Rehab

**Eligibility:** Income limits apply.

**Areas Served:** Yamhill County  
[hayc.org](http://hayc.org)

# COMMUNITY RESOURCES

## HOUSING & HOMELESS

## TRANSITIONAL HOUSING



### **Blanchet House**

310 NW Glisan St Portland, OR  
97209  
503-241-4340

**Hours:** Mon-Fri 8am-4:30pm

**Resources:** Transitional Home and Workplace, Support Group, Working Toward Self-Sufficiency

**Eligibility:** Men 18 or older

**Areas Served:** Yamhill County  
[blanchethouse.org](http://blanchethouse.org)

### **Grand Ronde Men's Transitional Living**

9615 Grand Ronde Rd. Grand Ronde, OR  
503-879-2046

**Hours:** Mon-Fri 8am-5pm

**Resources:** Sober Housing and Life Skills

**Eligibility:** Grand Ronde Tribal members or parents of tribal members

### **Grand Ronde Women's Transitional Living**

9615 Grand Ronde Rd. Grand Ronde, OR  
503-879-1452

**Hours:** Mon-Fri 8am-5pm

**Resources:** Sober Housing and Life Skills

**Eligibility:** Grand Ronde Tribal members or parents of tribal members

### **Oxford House**

805 Southeast Villard Street,  
McMinnville, OR  
503-883-9310

**Hours:** Mon-Fri 8am-5pm

**Resources:** Clean and Sober Housing

**Eligibility:** Women and Children only.

**Areas Served:** Yamhill County  
[oxfordhouse.org](http://oxfordhouse.org)

# COMMUNITY RESOURCES

## VETERANS SERVICES

## VETERANS SERVICES



### **American Legion**

30450 SW Parkway Avenue  
Wilsonville, OR 97070  
503-685-5006

**Hours:** Check website for local post

**Resources:** Assist Veterans with getting connected to VA Benefits, Temporary Assistance, and Support Groups

**Eligibility:** Veterans and Families

**Areas Served:** Polk, Marion, and Yamhill Counties  
[orlegion.org](http://orlegion.org)

### **American Red Cross**

1860 Hawthorne Ave. NE Salem  
503-585-5414

**Hours:** 24 hrs a day/7 days a week

**Resources:** Emergency Communications, Financial Assistance, Counseling, Other Support

**Eligibility:** Active Duty, National Guard/Reservist, Retired Military, and Immediate Family

**Areas Served:** Polk, Marion, and Yamhill Counties  
[redcross.org](http://redcross.org)

### **Battle Buddies**

630 Hood St. Salem, OR 97301

**Hours:** Thurs 11am-1pm

**Resources:** Weekly Gathering for Current and Former Military

**Eligibility:** Veteran

**Areas Served:** Polk, Marion, and Yamhill Counties  
[sovah.org](http://sovah.org)

### **Confederated Tribes of Grand Ronde**

9615 Grand Ronde Rd. Grand Ronde, OR  
503-879-5211

**Hours:** Mon-Fri 8am-5pm

**Resources:** Help connecting Veterans to services

**Eligibility:** Tribal members who have served in the military

**Areas Served:** Polk and Yamhill Counties  
[grandronde.org](http://grandronde.org)

### **Disabled American Veterans**

100 SW Main St. F12 Rm 25 8E  
Portland, OR  
503-412-4750

**Hours:** Call for Appointment

**Resources:** Help file a claim and support you through the process. Transportation to VA medical appointments.

**Eligibility:** Veterans and Families

**Areas Served:** Polk, Marion, and Yamhill Counties  
[dav.org](http://dav.org)

### **Disabled Veteran Outreach Program**

370 NE Norton Ln McMinnville, OR 97128  
503-472-5118

**Hours:** Mon-Fri 8am-5pm

**Resources:** Advocacy, employment, and career counseling

**Eligibility:** Veteran with Honorable Discharge

**Areas Served:** Polk, Marion, and Yamhill Counties