



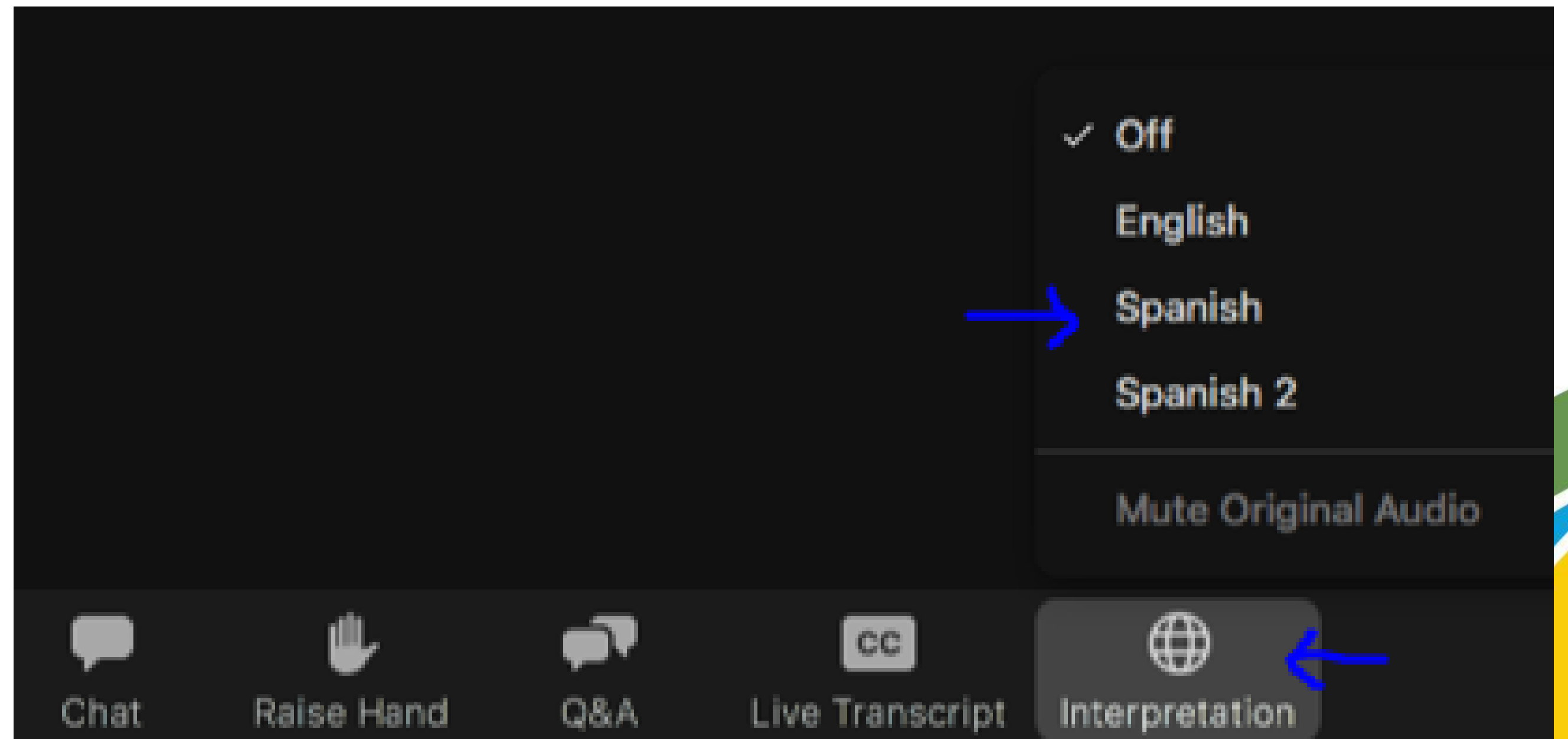
Yamhill Community Care Organization 2025 RFP Webinar



Logistics...

La logística ...

- Prefer Spanish?
- ¿Prefiere el español?



Webinar Outline

➤ Part 1

Overview of Yamhill Community Care's Joint Funding 2025 RFP

- Timeline
- Eligibility
- Project requirements
- Funding streams
- Question and answer

➤ Part 2

Application Details

- Evaluation Criteria – Weighting and Details
- Outcome Measures - Examples
- Foundant portal
- Review Committee
- Question and answer

Timeline

February 19 th	Technical Assistance Webinar
March 3 rd	RFP Released
March 3 rd – April 11 th	Technical Assistance Available
April 11th at 11:59pm	Applications Due
April 12 th – May 2 nd	Grant Review Committee Reviews Applications
May 2 nd – June 17 th	Governance Committees Review Applications
June 18 th	Award Notification
July 31 st	Contract execution deadline for grantees

Applicants MUST be:

- 501(c)3 organizations,
- Tribes, or
- Public or governmental agencies
- Multiple agencies as a single applicant (one must be fiscal sponsor)

Funding will NOT be awarded:

- To individuals in the form of scholarships
- For political purposes
- To disperse subgrants
- For any non-charitable purposes outside of the meaning of Chapter 65 of Oregon Administrative Rules (OAR) regarding 501c3 corporations
- To supplant existing funding streams for systems or programs
- To agencies with current outstanding contractual items
- To more than one organization per cycle
- For healthcare service delivery
- For any services or items covered by Medicaid

Eligibility & Funding Requirements

Project Requirements: Align with YCCO Vision and Mission

Vision: A unified healthy community that celebrates physical, mental, emotional, spiritual, and social well-being.

Mission: Working together to improve the quality of life and health of the Communities we serve by coordinating effective care.



Project Requirements:

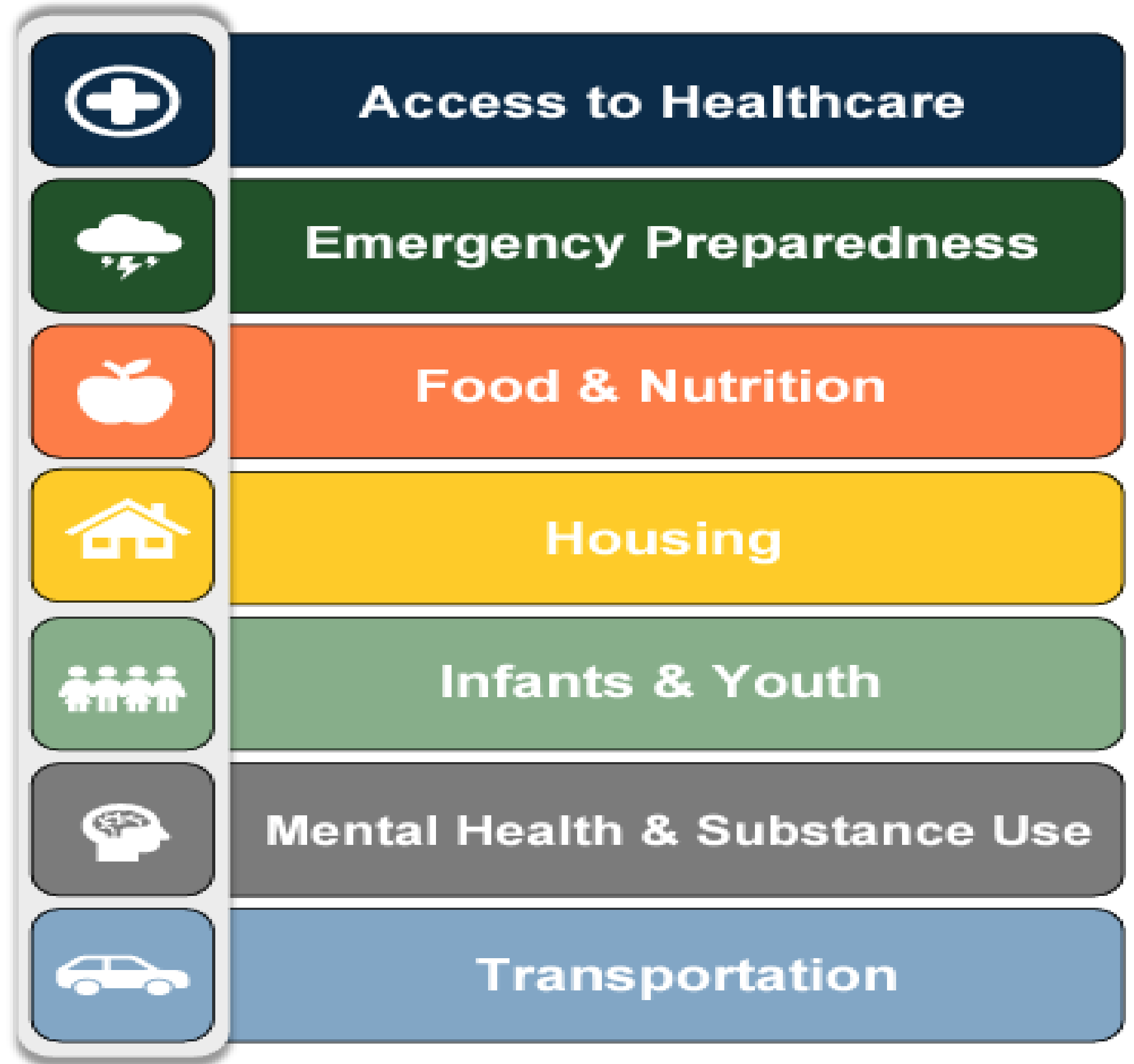
Support a population experiencing a disparity

Preference will be given to projects that address one or more underrepresented populations, including:

- People living in geographically rural or isolated areas
 - People of color
 - Members of Oregon Tribes
 - Non-English speakers
 - Members of the LGBTQIA2S+ community
 - People experiencing homelessness
 - People with physical or cognitive disabilities
 - Others as indicated
- Proposals must demonstrate that the populations being served or impacted were included in project development.

Project Requirements:
Align with the
Community Health
Improvement Plan
(CHIP)

Overview of Focus Areas



Funding Streams

CHIP: Community Health Improvement Plan

- Priorities: Mental health, access to healthcare, youth and elders, housing
- Past awards between \$5,000-\$20,000
- Total Amount Available: \$100,000



Funding Streams

THW: Traditional Health Worker

- Priorities: Training, mentorship, and support for THWs
- Past awards between \$4,000 - \$15,000



Funding Streams

SHARE: Supporting Health for All Through Reinvestment

- Social Determinants of Health and Equity (SDoH-E)
- Past awards \$60K to \$250K
- Total available SHARE funds vary each year.
 - SHARE cannot support healthcare delivery or covered benefits
 - SHARE can cover capital expenses.
 - Housing, nutrition, transit, and climate



What Are Capital Expenditures?

Capital expenditures are funds used by a company to acquire, upgrade, and maintain physical assets such as property, plants, buildings, technology, or equipment. They are often used to undertake new projects or investments by a company. Making capital expenditures on fixed assets can include repairing a roof (if the useful life of the roof is extended), purchasing a piece of equipment, or building a new facility.



Funding Streams

CPW: Community Prevention and Wellness

- Priorities: evidence and research-based, primary prevention strategies
- Past awards average \$100K
- Social emotional learning programs, suicide prevention programs, early childhood programs, nutrition, workforce development



What does 'Evidence-Based' mean?

"An evidence-based initiative is one that demonstrates a noticeable effect on improving outcomes through strong evidence from at least one high-quality study and has been reviewed by at least one reputable organization. "

- Institute of Education Sciences

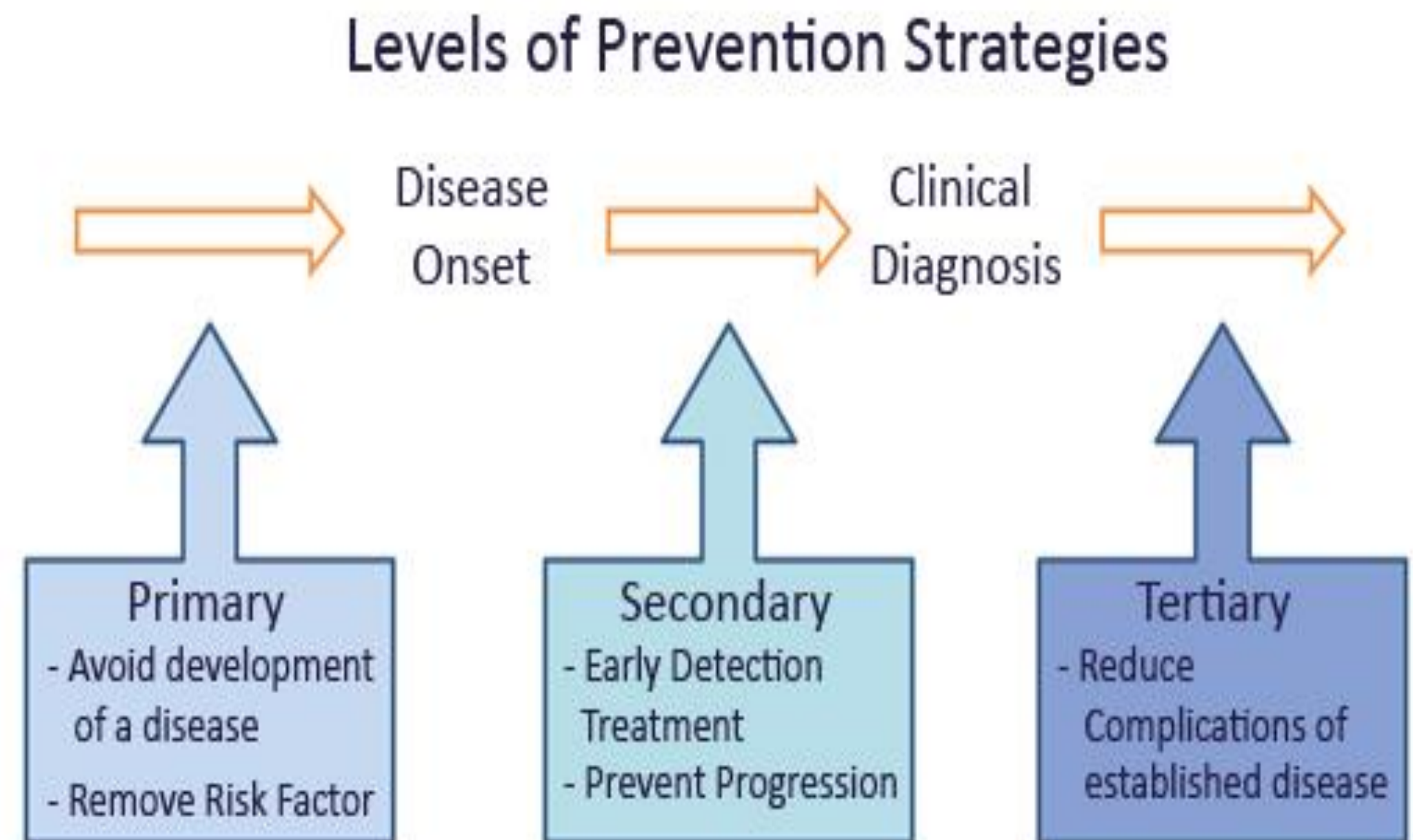
Evidence-Based Public Health



What is 'Primary Prevention'?

"Primary prevention refers to actions aimed at avoiding the manifestation of a disease. This may include actions to improve health through changing the impact of social and economic determinants on health; the provision of information on behavioral and medical health risks, alongside consultation and measures to decrease them."

-World Health Organization





Questions?

YCCO Spring RFP 2025: Application

Application Elements

Project Alignment



Application Sections and Weighting

Weight	Criteria
10%	Application Quality
20%	Sustainability
20%	Impact
25%	Population Served
25%	YCCO Alignment

Application Quality

- The applicant responds to all the questions in the application and answers each part of the question to the best of their ability.
- Application includes:
 - Proposed activities and objectives included in a timeline
 - At least three measurable outcomes
 - A realistic and clear sustainability plan
 - A clearly identified need



Strategies for sustainability:

- Show strong evidence for project continuation or maintenance
- Realistic for meeting a need
- Show capacity and resource to implement project
- Demonstrate collaboration or integration to leverage resources
- Demonstration of a diversified funding strategy to reduce reliance on single sources.

Sustainability Plan

What sustainability efforts will you use to ensure achieving your objectives, and long-term financial stability?

Outcome Measures

- *What is an outcome measure?*
An outcome measure is a specific and observable variable or set of variables that is used to assess the impact or effectiveness of an intervention, program, or activity.
- *What are outcome measures used for?*
Outcome measures are used to evaluate whether desired goals or objectives have been achieved and provide valuable data for decision-making, performance improvement, and accountability purposes.
- Strong applications will:
 - Have projects with a significant measurable positive impact on the identified need

Outcome Measures

Define clear and specific goals.

Consider indicators of success.

Select appropriate metrics.

Outcome Measures

SMART Objectives

Specific

Who & What?

Measurable

How Many?

Achievable

Organizational
capacity (time,
resources, etc.)

Relevant

To corresponding
goal

Timebound

When?

Outcome Measure – Example 1

Our program will reduce homelessness in our community by 5% in 1 year.

By the end of 12 months, our program will reduce homelessness in our community by 5% by providing stable housing and wraparound support services to at least 50 individuals, tracking progress through monthly outreach reports and shelter data.

Specific: Defines the approach (stable housing and support services).

Measurable: Specifies a 5% reduction and tracks outreach and shelter data.

Achievable: Includes a concrete number of individuals served.

Relevant: Aligns with homelessness reduction.

Time-bound: Clearly states a 12-month timeframe.

Outcome Measure – Example 2

50 adult patients will enroll in an eLearning online platform and will receive an accompanying booklet for lymphedema education and information.

Within 12 months, at least 50 adult patients will enroll in an eLearning online platform for lymphedema education and receive an accompanying booklet. Enrollment and engagement will be tracked through platform analytics and participant feedback surveys to assess knowledge retention and satisfaction.

Specific: Clearly defines the action (enrollment and booklet distribution).

Measurable: Sets a target of 50 enrollees and tracks engagement.

Achievable: Realistic within the given timeframe.

Relevant: Focuses on lymphedema education.

Time-bound: Specifies completion within 12 months.

Outcome Measure – Example 3

The goal of our project is to improve literacy rates by implementing the A,B,C evidence-based literacy improvement curriculum. We will track standardized test scores, reading proficiency levels, and school attendance for 1 year.

Over the course of 12 months, our project will improve literacy rates among participating students by implementing the A,B,C evidence-based literacy improvement curriculum. Success will be measured through a 10% increase in standardized test scores, improvements in reading proficiency levels, and increased school attendance, tracked through quarterly assessments and attendance records.

Specific: Clearly defines the curriculum and target outcomes.

Measurable: Includes a 10% improvement goal and tracking methods.

Achievable: Sets a realistic benchmark within a year.

Relevant: Focuses on literacy and related success indicators.

Time-bound: Specifies a 12-month period with quarterly tracking.

Implementation Plan and Timeline

The goal of this section is to provide a **CLEAR** understanding of your Project Activities

- What will you do?
- When will you start?
- When will you finish?

Population Served

- Projects must serve people in Yamhill, Washington, and/or Polk Counties
- Identify one or more populations that may be underrepresented
- Serve at least 50% low income or OHP members
- Include people impacted by the project in its development
 - Demonstrate ability to collect information on project participants by demographic



Alignment Making the Connection

Tell us how your project aligns with YCCO's Vision, Mission, and Funding Priorities.

The Goal

YCCO + Your Organization

Healthy Partnership that improves the Health and Well-Being in Our Community



How to Apply



Logon

Email Address*

The Email Address* field is required.

Password*

The Password* field is required.

[Log On](#) [Create New Account](#)

[Forgot your Password?](#)

2/21/2025

Welcome to the Yamhill Community Care (YCCO)'s Online Funding Portal.

New Users: Please click on "Create New Account" to complete the registration process and create your logon credentials.


Existing Users: Please enter your credentials and log in. If you forgot your password, please use the "Forgot your Password?" link to the left to reset your password.

Not Sure? If you think that you or someone at your organization has already registered in the system, do not create a new account. Please contact our funding staff at funding@yamhillcco.org to receive your username. Please allow 24 hours for staff to respond.

How to Apply

Create New Account

If you already have an Account, click the 'Cancel Account Creation' button to go to the Logon page

 Using the browser's back button will delete your registration information.

 This registration process has multiple steps you must complete before you can apply.

Fields with an asterisk (*) are required.

Organization Information

Organization Name*

EIN / Tax ID (##-#####)

Web Site

Telephone Number (###-###-#### x###)*

Organization Email

Address 1

Address 2

City

State

Postal Code

How to Apply

Applicants *must* use the grant application portal to submit applications.

Scooby doo's House

Quick search

Action Needed (0)

No Action (1)

Historical (0)

YCCO Spring Request for Proposals (RFP) 2025 - Test

Application

Submitted
01/28/2025



APPLY

ORGANIZATION HISTORY

ROLE (APPLICANT)

Application

C. ★ Public Profile

Collaborate 0

Bad guy llc

Process: YCCO Spring Request for Proposals (RFP) 2025 - Test

Contact Info

Request

Documents 0

Applicant:

Shanna Moon
shanna.rae.moon@gmail.com
478-396-6572



Organization:

Scooby doo's House
99-9899123
478-789-1011
6576 SW Firlock Way 8
Portland, OR 97223



[Contact Email History](#)

Application

Document Viewer

Application Packet

Question List



Fields with an asterisk () are required.*

> Background and timeline

> General Eligibility

> Funding

> Application Instructions

> Evaluation Criteria

> Contact Information

> Organization Background

Grant Review Committee Recruitment



Yamhill Community Care is recruiting members for our Grant Review Committee (GRC). This committee consists of community members and the purpose is to bring the community perspective to our review process.

Committee members will review up to 6 applications to this year's spring RFP and will be compensated \$40 per application if they meet eligibility criteria. The committee will review applications on a rolling basis from 4/12/25 – 5/2/25



Questions?

Connect With Us

funding@yamhillcco.org

THANK YOU